

ULTRA
CARBIDE



GERMAN
CARBIDE

FEATURING:
READY²RUN
BLANKS

ULTRA CARBIDE —

Premium Carbide for Innovative World-Class Solutions

We specialize in supplying premium carbide to world-class cutting tool manufacturers looking to provide innovative tooling solutions that shape the world. While focusing on coolant-through carbide for the cutting tool industry, our service and expertise go beyond simply offering quality carbide rod.

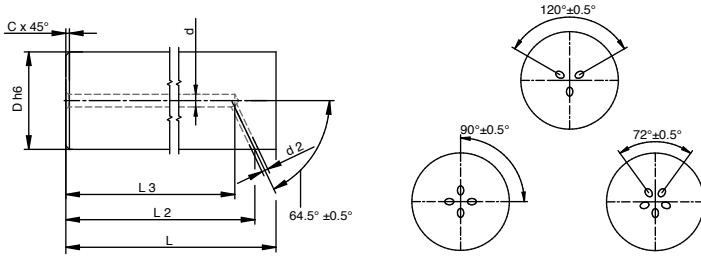
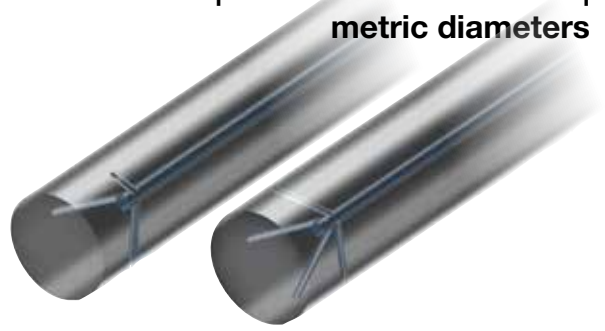
Ultra Carbide's principal focus is premium carbide for the production of rotary tools and custom parts to customer specifications. We also provide highly engineered wear parts for customized metal forming, and tailor-made products for the food, beverage, and agriculture industries. Our patented technologies, innovative products, and grade development allow us to meet the vast majority of our customers' requirements. Regardless of the architecture -- single central coolant duct, parallel straight coolant ducts, helical coolant ducts, or custom specials -- Ultra Carbide offers a wide range of high-performance carbide solutions.

Our production facilities have been supplying leading manufacturers in North America, South America, Europe, and Asia for over 25 years. Ultra Carbide is directly connected and affiliated with our three German carbide manufacturing plants in Kulmbach, Thurnau, and Berlin. This consortium offers supply chain security and significant availability of our products. Through single sourcing, Ultra Carbide provides benefits as the triune source of premium carbide for innovative world-class solutions. If you are from outside the United States, Canada, or Mexico we will happily connect you with our closest colleagues who can assist you.

Ready 2 Run Milling Blanks	4
Ready 2 Run Drilling Blanks	8
Ground Rod Central Coolant Duct	9
Ground Rod 2 Helical Coolant Ducts	10
Ground Rod 3 Helical Coolant Ducts	11
Ground Rod 2 Parallel Coolant Ducts	12
Ground Solid Rod	14
Unground Rod Central Coolant Duct	16
Unground Rod 2 Helical Coolant Ducts	17
Unground Rod 2 Parallel Coolant Ducts	20
Unground Rod 3 Helical Coolant Ducts	22
Unground Solid Rod	24
Unground Gun Drill Rod	27
Ground Center Drill Blanks	27
Micro-Twisted Rod	28
Overview Carbide Grade Portfolio	30
Application Recommendations	32
Wear Parts Grade Overview	34

ULTRA
CARBIDE

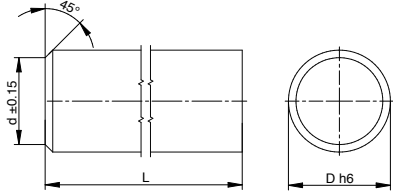
**h6 ground milling blanks | axial and lateral
coolant ducts | chamfered on one end |
metric diameters**



Item No.	Dia	OAL	# of duct exits	Grade
7923 006.058	6.00 mm	58.00 mm	3	GC100S
7923 006.076	6.00 mm	76.00 mm	3	GC100S
7923 008.064	8.00 mm	64.00 mm	3	GC100S
7923 008.101	8.00 mm	101.00 mm	3	GC100S
7923 010.073	10.00 mm	73.00 mm	3	GC100S
7923 010.101	10.00 mm	101.00 mm	3	GC100S
7923 012.084	12.00 mm	84.20 mm	3	GC100S
7923 012.101	12.00 mm	101.00 mm	3	GC100S
7923 014.084	14.00 mm	84.00 mm	3	GC100S
7923 014.101	14.00 mm	101.00 mm	3	GC100S
7923 016.101	16.00 mm	101.00 mm	3	GC100S
7923 016.093	16.00 mm	93.00 mm	3	GC100S
7923 018.093	18.00 mm	93.00 mm	3	GC100S
7923 018.102	18.00 mm	102.00 mm	3	GC100S
7923 020.093	20.00 mm	93.20 mm	3	GC100S
7923 020.105	20.00 mm	105.00 mm	3	GC100S
7923 020.151	20.00 mm	151.20 mm	3	GC100S
7923 025.122	25.00 mm	122.00 mm	3	GC100S
7923 025.152	25.00 mm	152.00 mm	3	GC100S
7924 006.076	6.00 mm	76.00 mm	4	GC100S
7924 008.064	8.00 mm	64.00 mm	4	GC100S
7924 008.101	8.00 mm	101.00 mm	4	GC100S
7924 010.067	10.00 mm	67.00 mm	4	GC100S
7924 010.073	10.00 mm	73.00 mm	4	GC100S
7924 010.101	10.00 mm	101.00 mm	4	GC100S
7924 012.074	12.00 mm	74.00 mm	4	GC100S
7924 012.084	12.00 mm	84.00 mm	4	GC100S

Item No.	Dia	OAL	# of duct exits	Grade
7924 012.101	12.00 mm	101.00 mm	4	GC100S
7924 014.084	14.00 mm	84.20 mm	4	GC100S
7924 014.101	14.00 mm	101.00 mm	4	GC100S
7924 016.093	16.00 mm	93.00 mm	4	GC100S
7924 016.101	16.00 mm	101.00 mm	4	GC100S
7924 018.093	18.00 mm	93.00 mm	4	GC100S
7924 018.102	18.00 mm	102.00 mm	4	GC100S
7924 020.093	20.00 mm	93.20 mm	4	GC100S
7924 020.105	20.00 mm	105.00 mm	4	GC100S
7924 020.151	20.00 mm	151.00 mm	4	GC100S
7924 025.122	25.00 mm	122.00 mm	4	GC100S
7924 025.152	25.00 mm	152.00 mm	4	GC100S
7925 006.076	6.00 mm	76.00 mm	5	GC100S
7925 008.101	8.00 mm	101.00 mm	5	GC100S
7925 010.073	10.00 mm	73.00 mm	5	GC100S
7925 010.101	10.00 mm	101.00 mm	5	GC100S
7925 012.084	12.00 mm	84.00 mm	5	GC100S
7925 012.101	12.00 mm	101.00 mm	5	GC100S
7925 014.101	14.00 mm	101.00 mm	5	GC100S
7925 016.083	16.00 mm	83.00 mm	5	GC100S
7925 016.093	16.00 mm	93.00 mm	5	GC100S
7925 016.101	16.00 mm	101.00 mm	5	GC100S
7925 018.151	18.00 mm	151.00 mm	5	GC100S
7925 020.105	20.00 mm	105.00 mm	5	GC100S
7925 020.151	20.00 mm	151.00 mm	5	GC100S
7925 025.122	25.00 mm	122.00 mm	5	GC100S
7925 025.152	25.00 mm	152.00 mm	5	GC100S

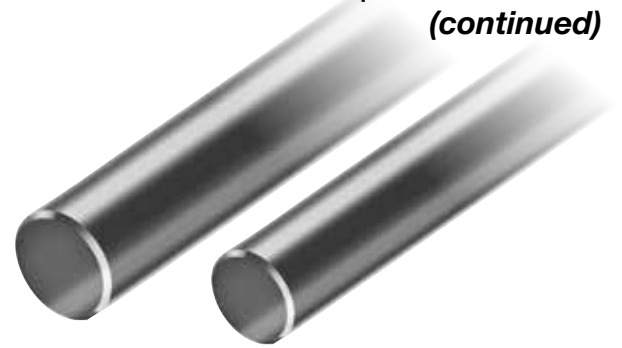
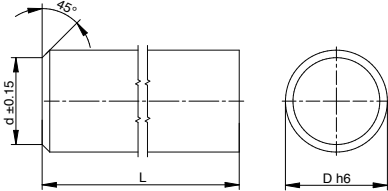
**h6 ground milling blanks | solid carbide |
chamfered on one end | inch diameters**



Item No.	Dia	OAL	dia in mm	Grade
7541 018.112	1/8"	1 1/2"	3.17 mm	GC100SN
7541 018.200		2"	3.17 mm	GC100SN
7541 018.300		3"	3.17 mm	GC100SN
7541 018.400		4"	3.17 mm	GC100SN
7864 018.112		1 1/2"	3.17 mm	GC100SN
7864 018.200		2"	3.17 mm	GC100SN
7864 018.300		3"	3.17 mm	GC100SN
7864 018.400		4"	3.17 mm	GC100SN
7541 316.212	3/16"	2 1/2"	4.76 mm	GC100SN
7864 316.112		1 1/2"	4.76 mm	GC100SN
7864 316.200		2"	4.76 mm	GC100SN
7864 316.212		2 1/2"	4.76 mm	GC100SN
7864 316.300		3"	4.76 mm	GC100SN
7125 014.212	1/4"	2.5"	6.35 mm	GC100SN
7541 014.112		1 1/2"	6.35 mm	GC100SN
7541 014.200		2"	6.35 mm	GC100SN
7541 014.212		2 1/2"	6.35 mm	GC100SN
7541 014.300		3"	6.35 mm	GC100SN
7541 014.314		3 1/4"	6.35 mm	GC100SN
7541 014.400		4"	6.35 mm	GC100SN
7864 014.112		1 1/2"	6.35 mm	GC100SN
7864 014.200		2"	6.35 mm	GC100SN
7864 014.212		2 1/2"	6.35 mm	GC100SN
7864 014.300		3"	6.35 mm	GC100SN
7864 014.314		3 1/4"	6.35 mm	GC100SN
7864 014.400		4"	6.35 mm	GC100SN
7541 516.200		5/16"	2"	7.93 mm
7541 516.212	2 1/2"		7.93 mm	GC100SN
7541 516.300	3"		7.93 mm	GC100SN
7541 516.312	3 1/2"		7.93 mm	GC100SN
7864 516.212	2 1/2"		7.93 mm	GC100SN
7864 516.300	3"		7.93 mm	GC100SN
7864 516.312	3 1/2"		7.93 mm	GC100SN
7864 516.400	4"		7.93 mm	GC100SN
7541 716.234	7/16"	2 3/4"	11.11 mm	GC100SN
7541 716.412		4 1/2"	11.11 mm	GC100SN
7541 716.500		5"	11.11 mm	GC100SN
7541 716.600		6"	11.11 mm	GC100SN
7864 716.212		2 1/2"	11.11 mm	GC100SN
7864 716.400		4"	11.11 mm	GC100SN

Item No.	Dia	OAL	dia in mm	Grade	
7125 012.300	1/2"	3"	12.70 mm	GC090U	
7125 012.400		4"	12.70 mm	GC090U	
7541 012.212		2 1/2"	12.70 mm	GC100SN	
7541 012.300		3"	12.70 mm	GC100SN	
7541 012.312		3 1/2"	12.70 mm	GC100SN	
7541 012.318		3 1/8"	12.70 mm	GC100SN	
7541 012.400		4"	12.70 mm	GC100SN	
7864 012.212		2 1/2"	12.70 mm	GC100SN	
7864 012.300		3"	12.70 mm	GC100SN	
7864 012.312		3 1/2"	12.70 mm	GC100SN	
7864 012.318		3 1/8"	12.70 mm	GC100SN	
7864 012.400		4"	12.70 mm	GC100SN	
7864 012.412		4 1/2"	12.70 mm	GC100SN	
7864 012.500		5"	12.70 mm	GC100SN	
7864 012.600	6"	12.70 mm	GC100SN		
7864 012.800	8"	12.70 mm	GC100SN		
7864 12.300	9/16"	3"	12.70 mm	GC100SN	
7864 12.400		4"	12.70 mm	GC100SN	
7541 916.300		3"	14.28 mm	GC100SN	
7541 916.312		3 1/2"	14.28 mm	GC100SN	
7864 916.300		3"	14.28 mm	GC100SN	
7864 916.312		3 1/2"	14.28 mm	GC100SN	
7541 058.300		5/8"	3"	15.87 mm	GC100SN
7541 058.312			3 1/2"	15.87 mm	GC100SN
7541 058.334			3 3/4"	15.87 mm	GC100SN
7541 058.400			4"	15.87 mm	GC100SN
7541 058.418			4 1/8"	15.87 mm	GC100SN
7541 058.500			5"	15.87 mm	GC100SN
7541 058.600			6"	15.87 mm	GC100SN
7864 058.212			2 1/2"	15.87 mm	GC100SN
7864 058.300	3"		15.87 mm	GC100SN	
7864 058.312	3 1/2"		15.87 mm	GC100SN	
7864 058.334	3 3/4"		15.87 mm	GC100SN	
7864 058.400	4"		15.87 mm	GC100SN	
7864 058.418	4 1/8"		15.87 mm	GC100SN	
7864 058.500	5"		15.87 mm	GC100SN	
7864 058.600	6"	15.87 mm	GC100SN		
7864 038.200	7/8"	2"	7.93 mm	GC100SN	
7864 038.212		2 1/2"	7.93 mm	GC100SN	
7864 038.300		3"	7.93 mm	GC100SN	
7864 038.312		3 1/2"	7.93 mm	GC100SN	
7864 038.314		3 1/4"	7.93 mm	GC100SN	
7864 038.400		4"	7.93 mm	GC100SN	
7864 038.600		6"	7.93 mm	GC100SN	
7864 38.212		2 1/2"	7.93 mm	GC100SN	

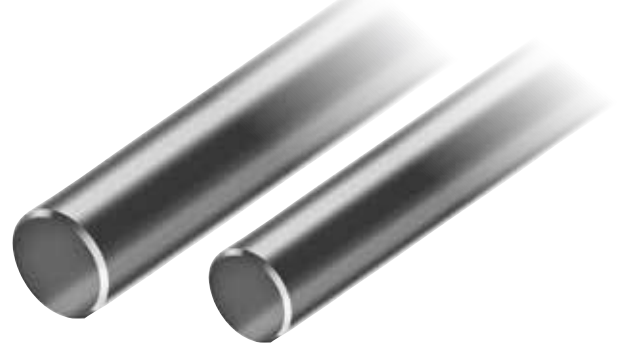
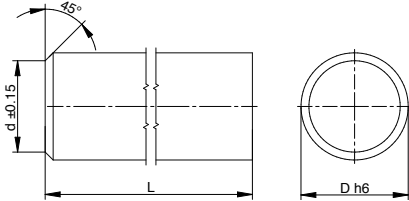
**h6 ground milling blanks | solid carbide
| chamfered on one end | inch diameters
(continued)**



Item No.	Dia	OAL	dia in mm	Grade	
7541 716.234	7/16"	2 3/4"	11.11 mm	GC100SN	
7541 716.412		4 1/2"	11.11 mm	GC100SN	
7541 716.500		5"	11.11 mm	GC100SN	
7541 716.600		6"	11.11 mm	GC100SN	
7864 716.212		2 1/2"	11.11 mm	GC100SN	
7864 716.400		4"	11.11 mm	GC100SN	
7125 012.300	1/2"	3"	12.70 mm	GC090U	
7125 012.400		4"	12.70 mm	GC090U	
7541 012.212		2 1/2"	12.70 mm	GC100SN	
7541 012.300		3"	12.70 mm	GC100SN	
7541 012.312		3 1/2"	12.70 mm	GC100SN	
7541 012.318		3 1/8"	12.70 mm	GC100SN	
7541 012.400		4"	12.70 mm	GC100SN	
7864 012.212		2 1/2"	12.70 mm	GC100SN	
7864 012.300		3"	12.70 mm	GC100SN	
7864 012.312		3 1/2"	12.70 mm	GC100SN	
7864 012.318		3 1/8"	12.70 mm	GC100SN	
7864 012.400		4"	12.70 mm	GC100SN	
7864 012.412		4 1/2"	12.70 mm	GC100SN	
7864 012.500		5"	12.70 mm	GC100SN	
7864 012.600		6"	12.70 mm	GC100SN	
7864 012.800		8"	12.70 mm	GC100SN	
7864 12.300		3"	12.70 mm	GC100SN	
7864 12.400		4"	12.70 mm	GC100SN	
7541 916.300		9/16"	3"	14.28 mm	GC100SN
7541 916.312			3 1/2"	14.28 mm	GC100SN
7864 916.300			3"	14.28 mm	GC100SN
7864 916.312			3 1/2"	14.28 mm	GC100SN
7541 058.300		5/8"	3"	15.87 mm	GC100SN
7541 058.312			3 1/2"	15.87 mm	GC100SN
7541 058.334	3 3/4"		15.87 mm	GC100SN	
7541 058.400	4"		15.87 mm	GC100SN	
7541 058.418	4 1/8"		15.87 mm	GC100SN	
7541 058.500	5"		15.87 mm	GC100SN	
7541 058.600	6"		15.87 mm	GC100SN	
7864 058.212	2 1/2"		15.87 mm	GC100SN	
7864 058.300	3"		15.87 mm	GC100SN	
7864 058.312	3 1/2"		15.87 mm	GC100SN	
7864 058.334	3 3/4"		15.87 mm	GC100SN	
7864 058.400	4"		15.87 mm	GC100SN	
7864 058.418	4 1/8"		15.87 mm	GC100SN	
7864 058.500	5"		15.87 mm	GC100SN	
7864 058.600	6"		15.87 mm	GC100SN	

Item No.	Dia	OAL	dia in mm	Grade
7541 034.300	3/4"	3"	19.05 mm	GC100SN
7864 034.400		4"	19.05 mm	GC100SN
7541 034.312		3 1/2"	19.05 mm	GC100SN
7864 034.312		3 1/2"	19.05 mm	GC100SN
7125 034.400		4"	19.05 mm	GC090U
7864 034.500		5"	19.05 mm	GC100SN
7541 034.612		6 1/2"	19.05 mm	GC100SN
7864 034.600		6"	19.05 mm	GC100SN
7541 078.400	7/8"	4"	22.22 mm	GC100SN
7864 078.400		4"	22.22 mm	GC100SN
7864 078.600		6"	22.22 mm	GC100SN
7541 001.300	1"	3"	25.40 mm	GC100SN
7541 001.600		6"	25.40 mm	GC100SN
7864 001.300		3"	25.40 mm	GC100SN
7864 001.400		4"	25.40 mm	GC100SN
7864 001.500		5"	25.40 mm	GC100SN
7864 001.600		6"	25.40 mm	GC100SN
7864 001.700		7"	25.40 mm	GC100SN
7541 114.712		1 1/4"	7 1/2"	31.75 mm
7864 114.412	4"		31.75 mm	GC100SN
7864 114.600	6"		31.75 mm	GC100SN
7864 114.712	7 1/2"		31.75 mm	GC100SN

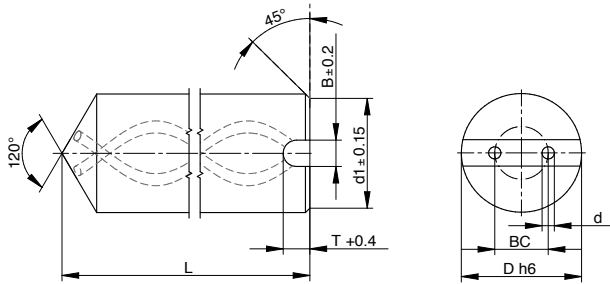
**h6 ground milling blanks | solid carbide |
chamfered on one end | metric diameters**



Item No.	Dia	OAL	Grade
7540 003.001	3.00 mm	39.50 mm	GC100S
7540 003.002		76.20 mm	GC100S
7540 003.003		38.30 mm	GC100S
7540 003.004		47.30 mm	GC100S
7540 003.005		52.30 mm	GC100S
7540 004.000	4.00 mm	51.00 mm	GC100S
7540 004.001		40.50 mm	GC100S
7540 004.002		32.50 mm	GC100S
7540 004.003		76.20 mm	GC100S
7540 004.004		59.30 mm	GC100S
7540 004.005		63.50 mm	GC100S
7540 004.006	67.50 mm	GC100S	
7540 004.500	4.50 mm	51.20 mm	GC100S
7540 005.000	5.00 mm	51.20 mm	GC100S
7540 005.001		76.20 mm	GC100S
7540 005.500	5.50 mm	51.20 mm	GC100S
7540 006.000	6.00 mm	51.20 mm	GC100S
7540 006.001		55.00 mm	GC100S
7540 006.002		58.20 mm	GC100S
7540 006.003		39.00 mm	GC100S
7540 006.004		76.20 mm	GC100S
7540 006.007		46.20 mm	GC100S
7590 006.065		66.20 mm	GC100S
7540 007.000	7.00 mm	62.00 mm	GC100S
7540 008.000	8.00 mm	59.00 mm	GC100S
7540 008.001		64.20 mm	GC100S
7540 008.002		44.00 mm	GC100S
7540 008.003		62.00 mm	GC100S
7540 008.004		76.20 mm	GC100S
7540 008.005		101.20 mm	GC100S
7540 008.006		56.20 mm	GC100S
7888 008.010		89.20 mm	GC100S
7540 009.001	9.00 mm	69.00 mm	GC100S
7126 010.005	10.00 mm	80.30 mm	GC120U
7540 010.000		67.20 mm	GC100S
7540 010.001		71.00 mm	GC100S
7540 010.002		73.20 mm	GC100S

Item No.	Dia	OAL	Grade	
7540 010.003	10.00 mm	51.00 mm	GC100S	
7540 010.004		101.20 mm	GC100S	
7540 010.005		49.20 mm	GC100S	
7540 010.006		56.20 mm	GC100S	
7540 010.007		77.00 mm	GC100S	
7540 010.008		81.20 mm	GC100S	
7125 012.000		12.00 mm	74.20 mm	GC090U
7126 012.001			84.20 mm	GC120U
7126 012.006	83.50 mm		GC120U	
7127 012.001	84.20 mm		GC120U	
7540 012.000	74.20 mm		GC100S	
7540 012.001	84.20 mm		GC100S	
7540 012.004	101.20 mm		GC100S	
7540 012.005	151.20 mm		GC100S	
7540 012.006	56.20 mm		GC100S	
7540 013.000	13.00 mm		77.00 mm	GC100S
7126 014.003	14.00 mm	84.20 mm	GC120U	
7540 014.000		84.20 mm	GC100S	
7540 014.001		76.20 mm	GC100S	
7540 014.002		151.20 mm	GC100S	
7540 014.004	101.20 mm	GC100S		
7200 016.000	16.00 mm	100.00 mm	GC060S	
7540 016.000		93.20 mm	GC100S	
7540 016.001		83.20 mm	GC100S	
7540 016.002		75.00 mm	GC100S	
7540 016.003		76.20 mm	GC100S	
7540 016.004		151.20 mm	GC100S	
7540 016.006		109.20 mm	GC100S	
7540 018.000		18.00 mm	101.00 mm	GC100S
7540 018.001	85.00 mm		GC100S	
7540 018.002	93.00 mm		GC100S	
7540 018.003	151.20 mm	GC100S		
7540 020.000	20.00 mm	93.20 mm	GC100S	
7540 020.001		105.00 mm	GC100S	
7540 020.002		100.00 mm	GC100S	
7540 020.003		102.00 mm	GC100S	
7540 020.004		151.20 mm	GC100S	
7540 020.006		127.20 mm	GC100S	
7540 025.000	25.00 mm	103.00 mm	GC100S	
7540 025.001		123.00 mm	GC100S	
7540 025.002		151.20 mm	GC100S	
7540 025.003		175.70 mm	GC100S	

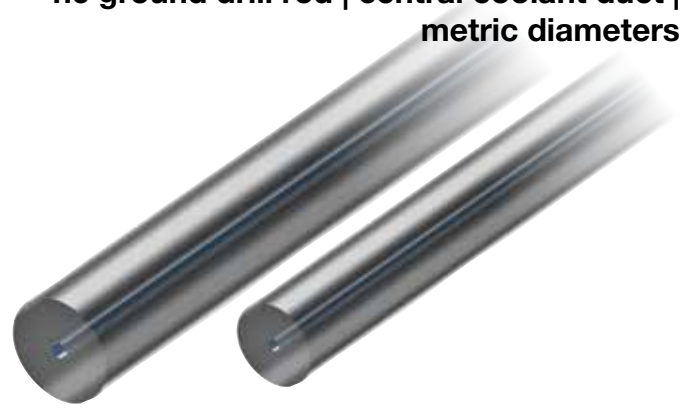
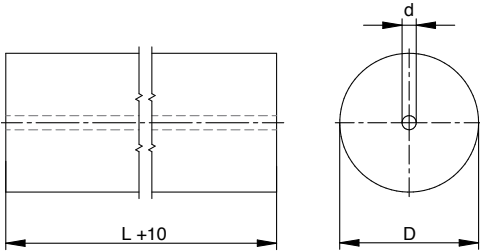
**h6 ground drill blanks | 2 coolant ducts |
120° point | chamfered & slotted back-end | metric diameters**



Item No.	Dia	OAL	Helix	Grade	Details
7349 006.002	6.00 mm	76.00 mm	30°	GC100S	BC 2.00 mm; d 0.80 mm; Pitch 32.65 mm
7349 006.000	6.00 mm	98.00 mm	30°	GC100S	BC 2.60 mm; d 0.70 mm; Pitch 32.65 mm
7349 008.000	8.00 mm	107.50 mm	30°	GC100S	BC 3.60 mm; d 1.25 mm; Pitch 43.53 mm
7349 008.001	8.00 mm	117.50 mm	30°	GC100S	BC 3.60 mm; d 1.25 mm; Pitch 43.53 mm
7349 010.000	10.00 mm	132.50 mm	30°	GC100S	BC 4.80 mm; d 1.40 mm; Pitch 54.41 mm
7349 012.000	12.00 mm	157.00 mm	30°	GC100S	BC 6.25 mm; d 1.55 mm; Pitch 65.30 mm
7349 014.000	14.00 mm	184.00 mm	30°	GC100S	BC 6.70 mm; d 1.90 mm; Pitch 76.18 mm
7349 016.000	16.00 mm	206.50 mm	30°	GC100S	BC 8.00 mm; d 2.10 mm; Pitch 87.06 mm
7349 018.000	18.00 mm	225.50 mm	30°	GC100S	BC 9.00 mm; d 2.30 mm; Pitch 97.95 mm
7349 020.000	20.00 mm	247.00 mm	30°	GC100S	BC 10.00 mm; d 2.50 mm; Pitch 108.83 mm
7561 016.000	16.00 mm	135.50 mm	30°	GC080S	BC 8.00 mm; d 2.10 mm; Pitch 87.06 mm
7567 006.000	6.00 mm	67.00 mm	30°	GC100S	BC 2.20 mm; d 0.50 mm; Pitch 22.46 mm
7567 010.000	10.00 mm	90.50 mm	30°	GC100S	BC 3.50 mm; d 0.80 mm; Pitch 37.44 mm
7567 012.000	12.00 mm	104.00 mm	30°	GC100S	BC 4.20 mm; d 0.90 mm; Pitch 44.93 mm
7567 016.000	16.00 mm	117.50 mm	30°	GC100S	BC 5.50 mm; d 1.20 mm; Pitch 59.90 mm
7568 006.000	6.00 mm	83.00 mm	30°	GC100S	BC 2.20 mm; d 0.50 mm; Pitch 22.46 mm
7568 010.000	10.00 mm	104.50 mm	30°	GC100S	BC 3.50 mm; d 0.80 mm; Pitch 37.44 mm
7568 012.000	12.00 mm	120.00 mm	30°	GC100S	BC 4.20 mm; d 0.90 mm; Pitch 44.93 mm
7915 006.000	6.00 mm	67.00 mm	30°	GC100S	BC 2.60 mm; d 0.7 mm; Pitch 32.65 mm
7915 006.001	6.00 mm	67.00 mm	30°	GC100S	BC 2.00 mm; d 0.8 mm; Pitch 32.65 mm
7915 006.002	6.00 mm	63.00 mm	30°	GC100S	BC 1.50 mm; d 0.6 mm; Pitch 20.40 mm
7915 008.000	8.00 mm	80.50 mm	30°	GC100S	BC 3.60 mm; d 1.25 mm; Pitch 43.53 mm
7915 010.000	10.00 mm	90.50 mm	30°	GC100S	BC 4.80 mm; d 1.4 mm; Pitch 54.41 mm
7915 012.000	12.00 mm	104.00 mm	30°	GC100S	BC 6.25 mm; d 1.55 mm; Pitch 65.30 mm
7915 014.000	14.00 mm	109.00 mm	30°	GC100S	BC 6.70 mm; d 1.90 mm; Pitch 76.18 mm
7915 016.000	16.00 mm	117.50 mm	30°	GC100S	BC 8.00 mm; d 2.10 mm; Pitch 87.06 mm
7915 018.000	18.00 mm	125.50 mm	30°	GC100S	BC 9.00 mm; d 2.30 mm; Pitch 97.95 mm
7915 020.000	20.00 mm	134.00 mm	30°	GC100S	BC 10.00 mm; d 2.50 mm; Pitch 108.83 mm
7916 006.000	6.00 mm	83.00 mm	30°	GC100S	BC 2.60 mm; d 0.70 mm; Pitch 32.65 mm
7916 008.000	8.00 mm	92.50 mm	30°	GC100S	BC 3.60 mm; d 1.25 mm; Pitch 43.53mm
7916 010.000	10.00 mm	104.50 mm	30°	GC100S	BC 4.80 mm; d 1.40 mm; Pitch 54.41 mm
7916 012.000	12.00 mm	120.00 mm	30°	GC100S	BC 6.25 mm; d 1.55 mm; Pitch 65.30 mm
7916 014.000	14.00 mm	126.00 mm	30°	GC100S	BC 6.70 mm; d 1.90 mm; Pitch 76.18 mm
7916 016.000	16.00 mm	135.50 mm	30°	GC100S	BC 8.00 mm; d 2.10 mm; Pitch 87.06 mm
7916 018.000	18.00 mm	145.50 mm	30°	GC100S	BC 9.00 mm; d 2.30 mm; Pitch 97.95 mm
7916 020.000	20.00 mm	156.00 mm	30°	GC100S	BC 10.00 mm; d 2.50 mm; Pitch 108.83 mm

Carbide Drill Rod

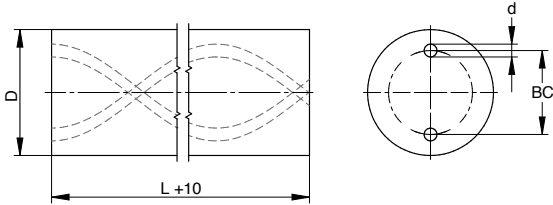
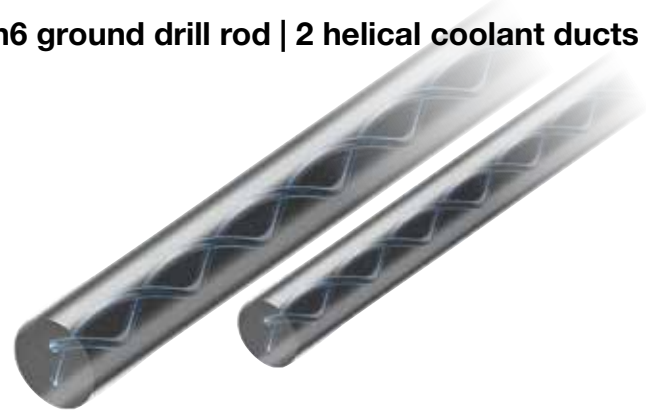
h6 ground drill rod | central coolant duct |
metric diameters



Item No.	Dia	OAL	Grade
7339 004.000	4.00 mm	330.00 mm	GC100S
7339 006.000	6.00 mm	330.00 mm	GC100S
7339 006.001	6.00 mm	330.00 mm	GC100S
7339 008.000	8.00 mm	330.00 mm	GC100S
7339 008.001	8.00 mm	330.00 mm	GC100S
7339 010.000	10.00 mm	330.00 mm	GC100S
7339 010.001	10.00 mm	330.00 mm	GC100S
7339 012.000	12.00 mm	330.00 mm	GC100S
7339 012.001	12.00 mm	330.00 mm	GC100S
7339 014.000	14.00 mm	330.00 mm	GC100S
7339 014.001	14.00 mm	330.00 mm	GC100S
7339 016.000	16.00 mm	330.00 mm	GC100S
7339 016.001	16.00 mm	330.00 mm	GC100S
7339 016.002	16.00 mm	330.00 mm	GC100S
7339 016.004	16.00 mm	330.00 mm	GC100S

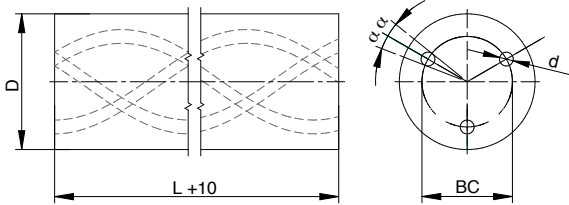
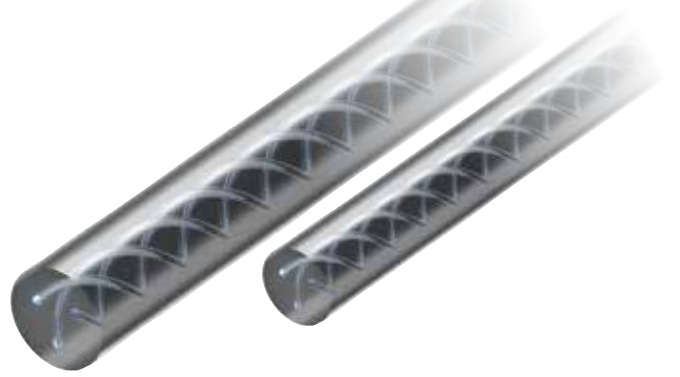
Item No.	Dia	OAL	Grade
7339 018.000	18.00 mm	330.00 mm	GC100S
7339 020.000	20.00 mm	330.00 mm	GC100S
7339 022.000	22.00 mm	330.00 mm	GC100S
7339 024.000	24.00 mm	330.00 mm	GC100S
7339 025.000	25.00 mm	330.00 mm	GC100S
7339 025.001	25.00 mm	330.00 mm	GC100S
7339 026.000	26.00 mm	330.00 mm	GC100S
7339 028.000	28.00 mm	330.00 mm	GC100S
7339 030.000	30.00 mm	330.00 mm	GC100S
7339 032.000	32.00 mm	330.00 mm	GC100S





Item No.	Dia	OAL	Grade	Helix
7583 006.000	6.00 mm	330.00 mm	GC100S	15°
7583 008.000	8.00 mm	330.00 mm	GC100S	15°
7583 010.000	10.00 mm	330.00 mm	GC100S	15°
7583 012.000	12.00 mm	330.00 mm	GC100S	15°
7583 014.000	14.00 mm	330.00 mm	GC100S	15°
7583 016.000	16.00 mm	330.00 mm	GC100S	15°
7583 018.000	18.00 mm	330.00 mm	GC100S	15°
7583 020.000	20.00 mm	330.00 mm	GC100S	15°
7328 006.000	6.00 mm	330.00 mm	GC100S	30°
7328 007.000	7.00 mm	330.00 mm	GC100S	30°
7328 008.000	8.00 mm	330.00 mm	GC100S	30°
7328 009.000	9.00 mm	330.00 mm	GC100S	30°
7328 010.000	10.00 mm	330.00 mm	GC100S	30°
7328 011.000	11.00 mm	330.00 mm	GC100S	30°
7328 012.000	12.00 mm	330.00 mm	GC100S	30°
7328 013.000	13.00 mm	110.00 mm	GC100S	30°
7328 013.000	13.00 mm	330.00 mm	GC100S	30°
7328 014.000	14.00 mm	330.00 mm	GC100S	30°
7328 015.000	15.00 mm	330.00 mm	GC100S	30°
7328 016.000	16.00 mm	330.00 mm	GC100S	30°
7328 017.000	17.00 mm	330.00 mm	GC100S	30°
7328 018.000	18.00 mm	330.00 mm	GC100S	30°
7328 019.000	19.00 mm	330.00 mm	GC100S	30°
7328 020.000	20.00 mm	330.00 mm	GC100S	30°
7328 021.000	21.00 mm	330.00 mm	GC100S	30°
7328 022.000	22.00 mm	330.00 mm	GC100S	30°
7328 023.000	23.00 mm	330.00 mm	GC100S	30°
7328 024.000	24.00 mm	330.00 mm	GC100S	30°
7328 025.000	25.00 mm	330.00 mm	GC100S	30°
7328 026.000	26.00 mm	330.00 mm	GC100S	30°
7328 028.000	28.00 mm	330.00 mm	GC100S	30°
7328 030.000	30.00 mm	330.00 mm	GC100S	30°
7328 032.000	32.00 mm	330.00 mm	GC100S	30°

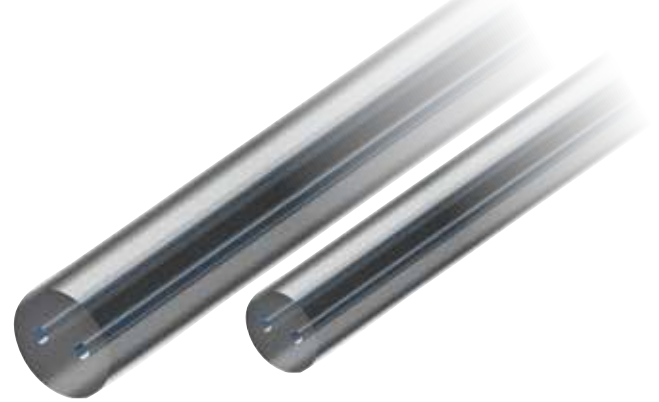
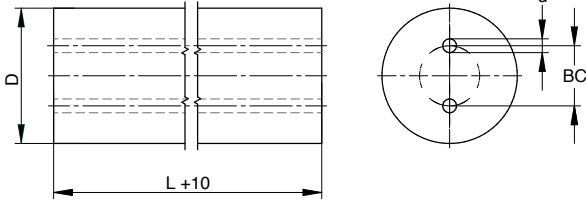
Item No.	Dia	OAL	Grade	Helix
7355 008.000	8.00 mm	415.00 mm	GC100S	30°
7355 010.000	10.00 mm	415.00 mm	GC100S	30°
7355 012.000	12.00 mm	415.00 mm	GC100S	30°
7355 014.000	14.00 mm	415.00 mm	GC100S	30°
7355 016.000	16.00 mm	415.00 mm	GC100S	30°
7355 018.000	18.00 mm	415.00 mm	GC100S	30°
7355 020.000	20.00 mm	415.00 mm	GC100S	30°
7330 006.000	6.00 mm	330.00 mm	GC100S	40°
7330 007.000	7.00 mm	330.00 mm	GC100S	40°
7330 008.000	8.00 mm	330.00 mm	GC100S	40°
7330 008.001	8.00 mm	330.00 mm	GC100S	40°
7330 009.000	9.00 mm	330.00 mm	GC100S	40°
7330 010.000	10.00 mm	330.00 mm	GC100S	40°
7330 010.001	10.00 mm	330.00 mm	GC100S	40°
7330 011.000	11.00 mm	330.00 mm	GC100S	40°
7330 012.000	12.00 mm	330.00 mm	GC100S	40°
7330 013.000	13.00 mm	330.00 mm	GC100S	40°
7330 013.000	13.00 mm	158.00 mm	GC100S	40°
7330 014.000	14.00 mm	330.00 mm	GC100S	40°
7330 015.000	15.00 mm	330.00 mm	GC100S	40°
7330 016.000	16.00 mm	330.00 mm	GC100S	40°
7330 016.001	16.00 mm	330.00 mm	GC100S	40°
7330 018.000	18.00 mm	330.00 mm	GC100S	40°
7330 018.001	18.00 mm	330.00 mm	GC100S	40°
7330 020.000	20.00 mm	330.00 mm	GC100S	40°
7330 020.000	20.00 mm	105.00 mm	GC100S	40°
7330 020.001	20.00 mm	330.00 mm	GC100S	40°
7330 022.000	22.00 mm	330.00 mm	GC100S	40°
7330 025.000	25.00 mm	330.00 mm	GC100S	40°



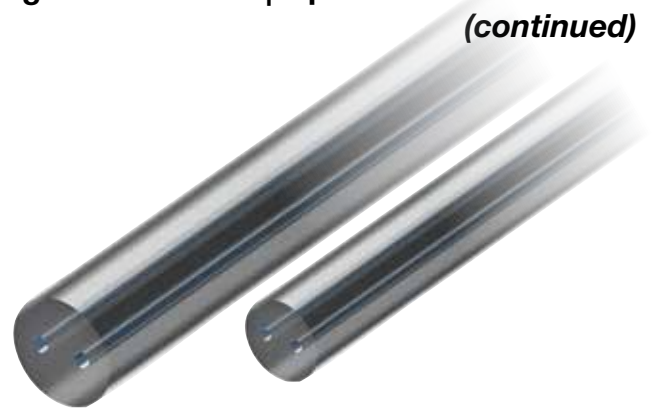
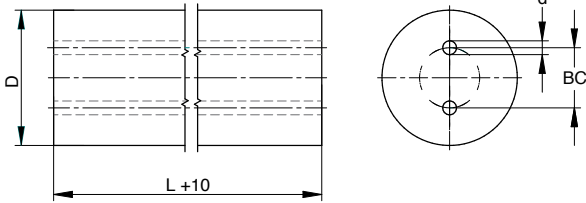
Item No.	Dia	OAL	Grade	Helix
7346 014.000	14.00 mm	330.00 mm	GC100S	30°
7346 030.000	30.00 mm	330.00 mm	GC100S	30°
7358 006.000	6.00 mm	330.00 mm	GC100S	30°
7358 008.000	8.00 mm	330.00 mm	GC100S	30°
7358 014.000	14.00 mm	330.00 mm	GC100S	30°
7358 016.000	16.00 mm	330.00 mm	GC100S	30°
7358 018.000	18.00 mm	330.00 mm	GC100S	30°
7358 020.000	20.00 mm	330.00 mm	GC100S	30°
7358 022.000	22.00 mm	330.00 mm	GC100S	30°
7358 025.000	25.00 mm	330.00 mm	GC100S	30°
7358 026.000	26.00 mm	330.00 mm	GC100S	30°
7358 028.000	28.00 mm	330.00 mm	GC100S	30°

Item No.	Dia	OAL	Grade	Helix
7359 006.000	6.00 mm	330.00 mm	GC100S	40°
7359 008.000	8.00 mm	330.00 mm	GC100S	40°
7359 010.000	10.00 mm	330.00 mm	GC100S	40°
7359 012.000	12.00 mm	330.00 mm	GC100S	40°
7359 014.000	14.00 mm	330.00 mm	GC100S	40°
7359 016.000	16.00 mm	330.00 mm	GC100S	40°
7359 018.000	18.00 mm	330.00 mm	GC100S	40°
7359 020.000	20.00 mm	330.00 mm	GC100S	40°
7359 022.000	22.00 mm	330.00 mm	GC100S	40°
7359 025.000	25.00 mm	330.00 mm	GC100S	40°
7359 027.000	27.00 mm	330.00 mm	GC100S	40°

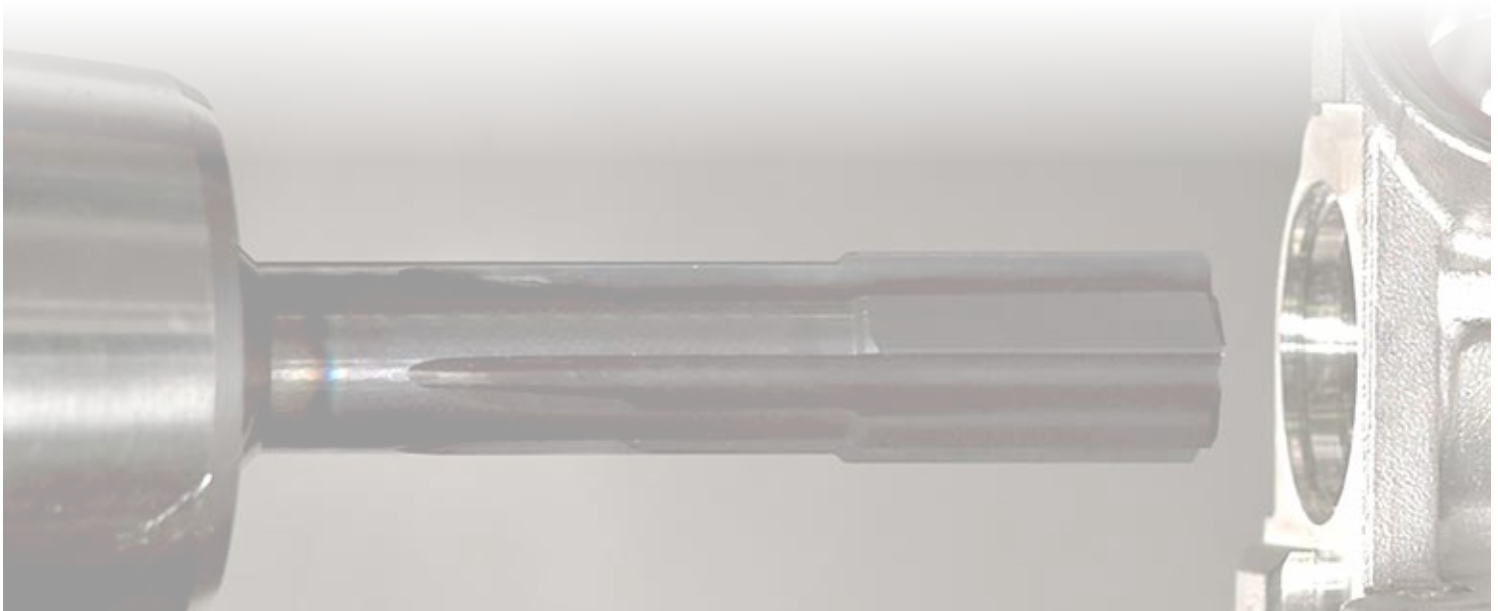


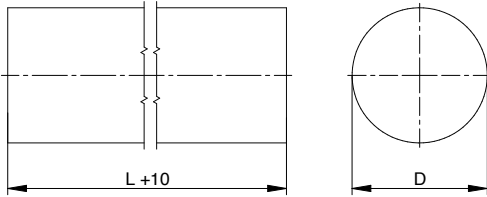
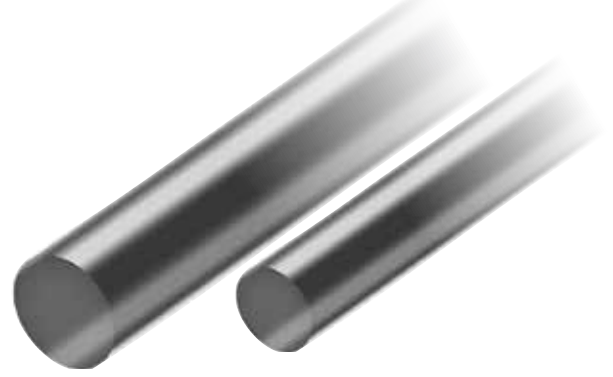


Item No.	Dia	OAL	Grade	Details
7301 010.301	10.00 mm	76.00 mm	GC100S	STANDARD PITCH CIRCLE 5.00 mm B.C. 1.40 mm DUCT DIA. FIXED LENGH
7302 004.000	4.00 mm	330.00 mm	GC100S	DECREASED PITCH CIRCLE 1.80 mm B.C. 0.80 mm DUCT DIA.
7302 005.000	5.00 mm	330.00 mm	GC100S	DECREASED PITCH CIRCLE 2.00 mm B.C. 0.80 mm DUCT DIA.
7302 006.000	6.00 mm	330.00 mm	GC100S	DECREASED PITCH CIRCLE 1.50 mm B.C. 0.80 mm DUCT DIA.
7302 006.001	6.00 mm	330.00 mm	GC100S	STANDARD PITCH CIRCLE 3.00 mm B.C. 1.00 mm DUCT DIA.
7302 006.005	6.00 mm	330.00 mm	GC100S	STANDARD PITCH CIRCLE 2.00 mm B.C. 0.80 mm DUCT DIA.
7302 006.006	6.00 mm	330.00 mm	GC100S	STANDARD PITCH CIRCLE 2.40 mm B.C. 1.00 mm DUCT DIA.
7302 007.000	7.00 mm	330.00 mm	GC100S	DECREASED PITCH CIRCLE 1.80 mm B.C. 0.80 mm DUCT DIA.
7302 007.001	7.00 mm	330.00 mm	GC100S	STANDARD PITCH CIRCLE 3.50 mm B.C. 1.00 mm DUCT DIA.
7302 008.000	8.00 mm	330.00 mm	GC100S	DECREASED PITCH CIRCLE 1.50 mm B.C. 0.80 mm DUCT DIA.
7302 008.001	8.00 mm	330.00 mm	GC100S	DECREASED PITCH CIRCLE 2.60 mm B.C. 1.00 mm DUCT DIA.
7302 008.002	8.00 mm	330.00 mm	GC100S	STANDARD PITCH CIRCLE 4.00 mm B.C. 1.00 mm DUCT DIA.
7302 008.003	8.00 mm	330.00 mm	GC100S	DECREASED PITCH CIRCLE 2.00 mm B.C. 0.80 mm DUCT DIA.
7302 009.000	9.00 mm	330.00 mm	GC100S	DECREASED PITCH CIRCLE 2.60 mm B.C. 1.00 mm DUCT DIA.
7302 009.001	9.00 mm	330.00 mm	GC100S	STANDARD PITCH CIRCLE 4.00 mm B.C. 1.40 mm DUCT DIA.
7302 009.525-0	3/8"	330.00 mm	GC100S	DECREASED PITCH CIRCLE 2.60 mm B.C. 1.00 mm DUCT DIA.
7302 009.525-1	3/8"	330.00 mm	GC100S	STANDARD PITCH CIRCLE 5.00 mm B.C. 1.40 mm DUCT DIA.
7302 010.000	10.00 mm	330.00 mm	GC100S	DECREASED PITCH CIRCLE 2.60 mm B.C. 1.00 mm DUCT DIA.
7302 010.001	10.00 mm	330.00 mm	GC100S	STANDARD PITCH CIRCLE 5.00 mm B.C. 1.40 mm DUCT DIA.
7302 010.002	10.00 mm	330.00 mm	GC100S	STANDARD PITCH CIRCLE 3.50 mm B.C. 1.20 mm DUCT DIA.
7302 011.000	11.00 mm	330.00 mm	GC100S	DECREASED PITCH CIRCLE 3.50 mm B.C. 1.20 mm DUCT DIA.
7302 011.001	11.00 mm	330.00 mm	GC100S	STANDARD PITCH CIRCLE 5.00 mm B.C. 1.40 mm DUCT DIA.
7302 012.000	12.00 mm	330.00 mm	GC100S	DECREASED PITCH CIRCLE 3.50 mm B.C. 1.20 mm DUCT DIA.
7302 012.001	12.00 mm	330.00 mm	GC100S	STANDARD PITCH CIRCLE 6.00 mm B.C. 1.75 mm DUCT DIA.
7302 012.700	1/2"	330.00 mm	GC100S	DECREASED PITCH CIRCLE 3.50 mm B.C. 1.20 mm DUCT DIA.
7302 012.701	1/2"	330.00 mm	GC100S	STANDARD PITCH CIRCLE 6.00 mm B.C. 1.75 mm DUCT DIA.
7302 013.000	13.00 mm	330.00 mm	GC100S	DECREASED PITCH CIRCLE 3.50 mm B.C. 1.20 mm DUCT DIA.
7302 013.001	13.00 mm	330.00 mm	GC100S	STANDARD PITCH CIRCLE 6.00 mm B.C. 1.75 mm DUCT DIA.
7302 014.000	14.00 mm	330.00 mm	GC100S	DECREASED PITCH CIRCLE 5.00 mm B.C. 1.50 mm DUCT DIA.
7302 014.001	14.00 mm	330.00 mm	GC100S	STANDARD PITCH CIRCLE 7.00 mm B.C. 1.75 mm DUCT DIA.
7302 015.000	15.00 mm	330.00 mm	GC100S	DECREASED PITCH CIRCLE 5.00 mm B.C. 1.50 mm DUCT DIA.
7302 015.001	15.00 mm	330.00 mm	GC100S	STANDARD PITCH CIRCLE 7.00 mm B.C. 2.00 mm DUCT DIA.
7302 015.875-0	5/8"	330.00 mm	GC100S	DECREASED PITCH CIRCLE 5.00 mm B.C. 1.50 mm DUCT DIA.
7302 015.875-1	5/8"	330.00 mm	GC100S	STANDARD PITCH CIRCLE 8.00 mm B.C. 2.00 mm DUCT DIA.
7302 016.000	16.00 mm	330.00 mm	GC100S	DECREASED PITCH CIRCLE 5.00 mm B.C. 1.50 mm DUCT DIA.
7302 016.001	16.00 mm	330.00 mm	GC100S	STANDARD PITCH CIRCLE 8.00 mm B.C. 2.00 mm DUCT DIA.
7302 017.000	17.00 mm	330.00 mm	GC100S	STANDARD PITCH CIRCLE 6.20 mm B.C. 2.00 mm DUCT DIA.
7302 017.001	17.00 mm	330.00 mm	GC100S	STANDARD PITCH CIRCLE 8.00 mm B.C. 2.00 mm DUCT DIA.
7302 018.000	18.00 mm	330.00 mm	GC100S	DECREASED PITCH CIRCLE 6.20 mm B.C. 2.00 mm DUCT DIA.
7302 018.001	18.00 mm	330.00 mm	GC100S	STANDARD PITCH CIRCLE 9.00 mm B.C. 2.00 mm DUCT DIA.



Item No.	Dia	OAL	Grade	Details
7302 019.000	19.00 mm	330.00 mm	GC100S	DECREASED PITCH CIRCLE 6.20 mm B.C. 2.00 mm DUCT DIA.
7302 019.001	19.00 mm	330.00 mm	GC100S	STANDARD PITCH CIRCLE 9.00 mm B.C. 2.00 mm DUCT DIA.
7302 019.050-0	3/4"	330.00 mm	GC100S	DECREASED PITCH CIRCLE 6.20 mm B.C. 2.00 mm DUCT DIA.
7302 019.050-1	3/4"	330.00 mm	GC100S	STANDARD PITCH CIRCLE 9.00 mm B.C. 2.00 mm DUCT DIA.
7302 020.000	20.00 mm	330.00 mm	GC100S	DECREASED PITCH CIRCLE 6.20 mm B.C. 2.00 mm DUCT DIA.
7302 020.001	20.00 mm	330.00 mm	GC100S	STANDARD PITCH CIRCLE 10.00 mm B.C. 2.50 mm DUCT DIA.
7302 020.002	20.00 mm	330.00 mm	GC100S	DECREASED PITCH CIRCLE 3.50 MM B.C. 1.50 MM DUCT DIA.
7302 021.000	21.00 mm	330.00 mm	GC100S	DECREASED PITCH CIRCLE 6.20 mm B.C. 2.00 mm DUCT DIA.
7302 021.001	21.00 mm	330.00 mm	GC100S	STANDARD PITCH CIRCLE 10.00 mm B.C. 2.50 mm DUCT DIA.
7302 022.001	22.00 mm	330.00 mm	GC100S	STANDARD PITCH CIRCLE 11.00 mm B.C. 2.50 mm DUCT DIA.
7302 022.000	22.00 mm	330.00 mm	GC100S	DECREASED PITCH CIRCLE 6.20 mm B.C. 2.00 mm DUCT DIA.
7302 024.001	24.00 mm	328.00 mm	GC100S	STANDARD PITCH CIRCLE 12.00 mm B.C. 3.00 mm DUCT DIA.
7302 024.000	24.00 mm	330.00 mm	GC100S	DECREASED PITCH CIRCLE 7.50 mm B.C. 2.00 mm DUCT DIA.
7302 024.001	24.00 mm	330.00 mm	GC100S	STANDARD PITCH CIRCLE 12.00 mm B.C. 3.00 mm DUCT DIA.
7302 025.000	25.00 mm	330.00 mm	GC100S	DECREASED PITCH CIRCLE 7.50 mm B.C. 2.00 mm DUCT DIA.
7302 025.001	25.00 mm	330.00 mm	GC100S	STANDARD PITCH CIRCLE 12.00 mm B.C. 3.00 mm DUCT DIA.
7302 025.402	25.40 mm	330.00 mm	GC100S	DECREASED PITCH CIRCLE 7.50 mm B.C. 2.00 mm DUCT DIA.
7302 032.000	32.00 mm	330.00 mm	GC100S	DECREASED PITCH CIRCLE 9.0 mm B.C. 2.50 mm DUCT DIA.
7302 032.001	32.00 mm	330.00 mm	GC100S	STANDARD PITCH CIRCLE 14.0 mm B.C. 3.0 mm DUCT DIA.



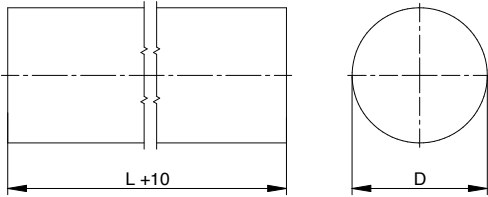
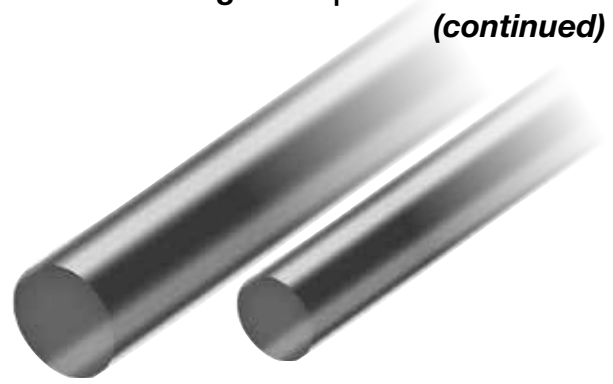


Item No.	Dia	OAL	Grade
7311 004.000	4.00 mm	330.00 mm	GC120U
7311 006.000	6.00 mm	330.00 mm	GC120U
7031 005.000	5.00 mm	330.00 mm	GC060F
7031 006.000	6.00 mm	330.00 mm	GC060F
7031 008.000	8.00 mm	330.00 mm	GC060F
7031 010.000	10.00 mm	330.00 mm	GC060F
7031 012.000	12.00 mm	330.00 mm	GC060F
7031 016.000	16.00 mm	330.00 mm	GC060F
7032 005.000	5.00 mm	330.00 mm	GC080S
7032 006.000	6.00 mm	330.00 mm	GC080S
7032 007.000	7.00 mm	330.00 mm	GC080S
7032 008.000	8.00 mm	330.00 mm	GC080S
7032 010.000	10.00 mm	330.00 mm	GC080S
7032 011.000	11.00 mm	330.00 mm	GC080S
7032 012.000	12.00 mm	330.00 mm	GC080S
7032 016.000	16.00 mm	330.00 mm	GC080S
7032 020.000	20.00 mm	330.00 mm	GC080S
7075 001.000	1.00 mm	330.00 mm	GC100S
7075 002.000	2.00 mm	330.00 mm	GC100S
7075 003.000	3.00 mm	330.00 mm	GC100S
7075 003.500	3.50 mm	330.00 mm	GC100S
7075 004.000	4.00 mm	330.00 mm	GC100S
7075 004.500	4.50 mm	330.00 mm	GC100S
7075 005.000	5.00 mm	330.00 mm	GC100S
7075 006.000	6.00 mm	330.00 mm	GC100S
7075 006.500	6.50 mm	330.00 mm	GC100S
7075 007.000	7.00 mm	330.00 mm	GC100S
7075 007.500	7.50 mm	330.00 mm	GC100S
7075 008.000	8.00 mm	330.00 mm	GC100S
7075 008.500	8.50 mm	330.00 mm	GC100S
7075 009.000	9.00 mm	330.00 mm	GC100S
7075 010.000	10.00 mm	330.00 mm	GC100S
7075 010.500	10.50 mm	330.00 mm	GC100S
7075 011.000	11.00 mm	330.00 mm	GC100S
7075 012.000	12.00 mm	330.00 mm	GC100S
7075 013.000	13.00 mm	330.00 mm	GC100S
7075 014.000	14.00 mm	330.00 mm	GC100S
7075 015.000	15.00 mm	330.00 mm	GC100S
7075 016.000	16.00 mm	330.00 mm	GC100S
7075 017.000	17.00 mm	330.00 mm	GC100S
7075 018.000	18.00 mm	330.00 mm	GC100S
7075 019.000	19.00 mm	330.00 mm	GC100S
7075 020.000	20.00 mm	330.00 mm	GC100S
7075 021.000	21.00 mm	330.00 mm	GC100S
7075 022.000	22.00 mm	330.00 mm	GC100S
7075 023.000	23.00 mm	330.00 mm	GC100S
7075 024.000	24.00 mm	330.00 mm	GC100S

Item No.	Dia	OAL	Grade
7075 025.000	25.00 mm	330.00 mm	GC100S
7075 026.000	26.00 mm	330.00 mm	GC100S
7075 027.000	27.00 mm	330.00 mm	GC100S
7075 028.000	28.00 mm	330.00 mm	GC100S
7075 030.000	30.00 mm	330.00 mm	GC100S
7075 032.000	32.00 mm	330.00 mm	GC100S
7075 038.000	38.00 mm	330.00 mm	GC100S
7075 040.000	40.00 mm	330.00 mm	GC100S
7085 003.000	3.00 mm	100.00 mm	GC100S
7085 003.500	3.50 mm	100.00 mm	GC100S
7085 004.000	4.00 mm	100.00 mm	GC100S
7085 005.000	5.00 mm	100.00 mm	GC100S
7085 006.000	6.00 mm	100.00 mm	GC100S
7085 007.000	7.00 mm	100.00 mm	GC100S
7085 008.000	8.00 mm	100.00 mm	GC100S
7085 009.000	9.00 mm	100.00 mm	GC100S
7085 010.000	10.00 mm	100.00 mm	GC100S
7085 011.000	11.00 mm	100.00 mm	GC100S
7085 012.000	12.00 mm	100.00 mm	GC100S
7085 013.000	13.00 mm	100.00 mm	GC100S
7085 014.000	14.00 mm	100.00 mm	GC100S
7085 015.000	15.00 mm	100.00 mm	GC100S
7085 016.000	16.00 mm	100.00 mm	GC100S
7085 018.000	18.00 mm	100.00 mm	GC100S
7085 020.000	20.00 mm	100.00 mm	GC100S
7085 025.000	25.00 mm	100.00 mm	GC100S
7147 003.175	1/8"	330.00 mm	GC100SX
7147 006.000	6.00 mm	330.00 mm	GC100SX
7147 006.350	1/4"	330.00 mm	GC100SX
7147 008.000	8.00 mm	330.00 mm	GC100SX
7147 009.525	3/8"	330.00 mm	GC100SX
7147 010.000	10.00 mm	330.00 mm	GC100SX
7147 012.000	12.00 mm	330.00 mm	GC100SX
7147 012.700	1/2"	330.00 mm	GC100SX
7147 014.000	14.00 mm	330.00 mm	GC100SX
7147 015.875	5/8"	330.00 mm	GC100SX
7147 016.000	16.00 mm	330.00 mm	GC100SX
7147 019.050	3/4"	330.00 mm	GC100SX
7147 020.000	20.00 mm	330.00 mm	GC100SX
7147 025.000	25.00 mm	330.00 mm	GC100SX
7147 025.400	1"	330.00 mm	GC100SX
7187 005.000	5.00 mm	330.00 mm	GC090U
7187 006.000	6.00 mm	330.00 mm	GC090U
7187 010.000	10.00 mm	330.00 mm	GC090U
7187 012.000	12.00 mm	330.00 mm	GC090U
7187 016.000	16.00 mm	330.00 mm	GC090U
7187 020.000	20.00 mm	330.00 mm	GC090U

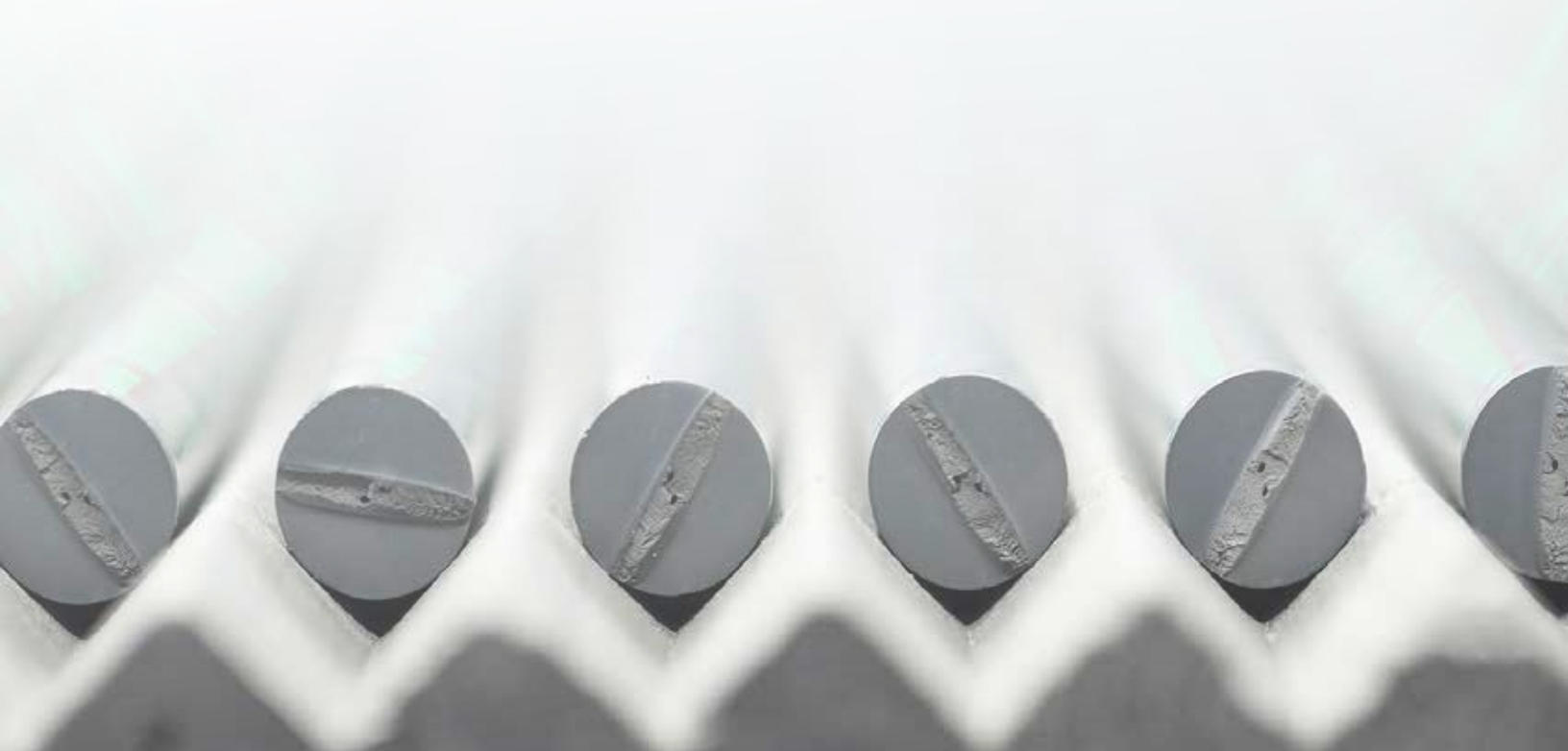
Solid Carbide Rod

h6 ground | solid carbide rod
(continued)



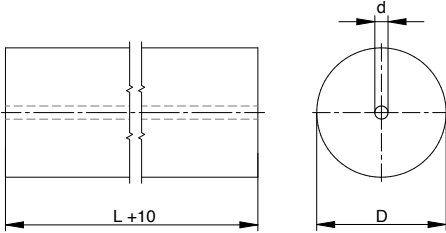
Item No.	Dia	OAL	Grade
7187 022.000	20.00 mm	330.00 mm	GC090U
7187 025.000	25.00 mm	330.00 mm	GC090U
7319 004.000	4.00 mm	330.00 mm	GC060S
7319 006.000	6.00 mm	330.00 mm	GC060S
7319 008.000	8.00 mm	330.00 mm	GC060S
7319 010.000	10.00 mm	330.00 mm	GC060S
7319 012.000	12.00 mm	330.00 mm	GC060S
7319 016.000	16.00 mm	330.00 mm	GC060S
7319 018.000	18.00 mm	330.00 mm	GC060S
7354 006.000	6.00 mm	415.00 mm	GC100S
7354 008.000	8.00 mm	415.00 mm	GC100S
7354 010.000	10.00 mm	415.00 mm	GC100S
7354 012.000	12.00 mm	415.00 mm	GC100S
7354 014.000	14.00 mm	415.00 mm	GC100S
7354 016.000	16.00 mm	415.00 mm	GC100S

Item No.	Dia	OAL	Grade
7354 018.000	18.00 mm	415.00 mm	GC100S
7354 020.000	20.00 mm	415.00 mm	GC100S
7932 003.175	1/8"	330.00 mm	GC100S
7932 004.762	3/16"	330.00 mm	GC100S
7932 006.350	1/4"	330.00 mm	GC100S
7932 007.938	5/16"	330.00 mm	GC100S
7932 009.520	3/8"	330.00 mm	GC100S
7932 011.110	7/16"	330.00 mm	GC100S
7932 012.700	1/2"	330.00 mm	GC100S
7932 014.280	9/16"	330.00 mm	GC100S
7932 015.870	5/8"	330.00 mm	GC100S
7932 019.050	3/4"	330.00 mm	GC100S
7932 022.225	7/8"	330.00 mm	GC100S
7932 025.400	1"	330.00 mm	GC100S



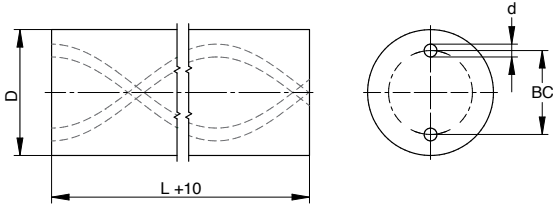
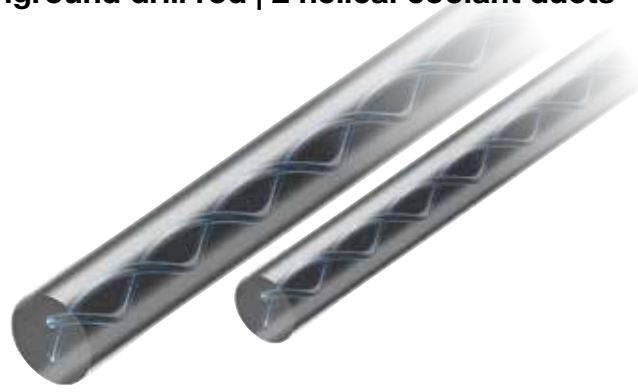
Carbide Drill Rod

unground drill rod | central coolant duct |
metric diameters



Item No.	Dia	OAL	Grade
7150 006.300	6.30 mm	330.00 mm	GC060S
7150 008.300	8.30 mm	330.00 mm	GC060S
7150 010.300	10.30 mm	330.00 mm	GC060S
7150 012.300	12.30 mm	330.00 mm	GC060S
7150 014.300	14.30 mm	330.00 mm	GC060S
7150 016.300	16.30 mm	330.00 mm	GC060S
7150 026.300	26.30 mm	330.00 mm	GC060S

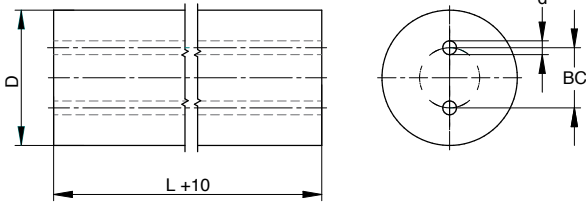
Item No.	Dia	OAL	Grade
7387 004.500	4.50 mm	330.00 mm	GC100S
7387 006.300	6.30 mm	330.00 mm	GC100S
7387 006.301	6.30 mm	330.00 mm	GC100S
7387 008.300	8.30 mm	330.00 mm	GC100S
7387 008.301	8.30 mm	330.00 mm	GC100S
7387 010.300	10.30 mm	330.00 mm	GC100S
7387 010.301	10.30 mm	330.00 mm	GC100S
7387 012.300	12.30 mm	330.00 mm	GC100S
7387 012.301	12.30 mm	330.00 mm	GC100S
7387 013.300	13.30 mm	330.00 mm	GC100S
7387 014.300	14.30 mm	330.00 mm	GC100S
7387 014.301	14.30 mm	330.00 mm	GC100S
7387 016.300	16.30 mm	330.00 mm	GC100S
7387 016.301	16.30 mm	330.00 mm	GC100S
7387 016.302	16.30 mm	330.00 mm	GC100S
7387 018.300	18.30 mm	330.00 mm	GC100S
7387 020.300	20.30 mm	330.00 mm	GC100S
7387 022.300	22.30 mm	330.00 mm	GC100S
7387 024.300	24.30 mm	330.00 mm	GC100S
7387 025.300	25.30 mm	330.00 mm	GC100S
7387 026.300	26.30 mm	330.00 mm	GC100S
7387 028.300	28.30 mm	330.00 mm	GC100S
7387 030.300	30.30 mm	330.00 mm	GC100S
7387 032.300	32.30 mm	330.00 mm	GC100S
7987 012.300	12.30 mm	415.00 mm	GC100S
7987 016.300	16.30 mm	415.00 mm	GC100S
7987 018.300	18.30 mm	415.00 mm	GC100S
7987 020.300	20.30 mm	415.00 mm	GC100S
7987 025.300	25.30 mm	415.00 mm	GC100S
7987 025.301	25.30 mm	415.00 mm	GC100S



Item No.	Dia	OAL	Grade	Helix	Details
7945 004.300	4.30 mm	330.00 mm	GC100S	15°	2.10 mm B.C. 0.60 mm DUCT DIA. 46.90 mm PITCH
7945 005.300	5.30 mm	330.00 mm	GC100S	15°	2.60 mm B.C. 0.70 mm DUCT DIA. 58.62 mm PITCH
7945 006.300	6.30 mm	330.00 mm	GC100S	15°	2.60 mm B.C. 0.70 mm DUCT DIA. 70.35 mm PITCH
7945 006.301	6.30 mm	330.00 mm	GC100S	15°	2.60 mm B.C. 1.00 mm DUCT DIA. 70.35 mm PITCH
7945 008.300	8.30 mm	330.00 mm	GC100S	15°	3.60 mm B.C. 1.25 mm DUCT DIA. 93.80 mm PITCH
7945 010.300	10.30 mm	330.00 mm	GC100S	15°	4.80 mm B.C. 1.40 mm DUCT DIA. 117.25 mm PITCH
7945 012.300	12.30 mm	330.00 mm	GC100S	15°	6.25 mm B.C. 1.55 mm DUCT DIA. 140.70 mm PITCH
7945 014.300	14.30 mm	330.00 mm	GC100S	15°	6.70 mm B.C. 1.90 mm DUCT DIA. 164.14 mm PITCH
7945 016.300	16.30 mm	330.00 mm	GC100S	15°	8.00 mm B.C. 2.10 mm DUCT DIA. 187.59 mm PITCH
7945 018.300	18.30 mm	330.00 mm	GC100S	15°	9.00 mm B.C. 2.30 mm DUCT DIA. 211.04 mm PITCH
7945 020.300	20.30 mm	330.00 mm	GC100S	15°	10.00 mm B.C. 2.50 mm DUCT DIA. 234.49 mm PITCH
7945 023.300	23.30 mm	330.00 mm	GC100S	15°	12.00 mm B.C. 2.50 mm DUCT DIA. 269.67 mm PITCH
7945 026.300	26.30 mm	330.00 mm	GC100S	15°	12.00 mm B.C. 2.50 mm DUCT DIA. 304.84 mm PITCH
7947 006.300	6.30 mm	415.00 mm	GC100S	15°	2.60 mm B.C. 0.70 mm DUCT DIA. 70.35 mm PITCH
7947 008.300	8.30 mm	415.00 mm	GC100S	15°	3.60 mm B.C. 1.25 mm DUCT DIA. 93.80 mm PITCH
7947 010.300	10.30 mm	415.00 mm	GC100S	15°	4.80 mm B.C. 1.40 mm DUCT DIA. 117.25 mm PITCH
7947 012.300	12.30 mm	415.00 mm	GC100S	15°	6.25 mm B.C. 1.55 mm DUCT DIA. 140.70 mm PITCH
7947 014.300	14.30 mm	415.00 mm	GC100S	15°	6.70 mm B.C. 1.90 mm DUCT DIA. 164.14 mm PITCH
7947 016.300	16.30 mm	415.00 mm	GC100S	15°	8.00 mm B.C. 2.10 mm DUCT DIA. 187.59 mm PITCH
7947 020.300	20.30 mm	415.00 mm	GC100S	15°	10.00 mm B.C. 2.50 mm DUCT DIA. 234.49 mm PITCH
7353 006.300	6.30 mm	415.00 mm	GC100S	30°	2.60 mm B.C. 0.70 mm DUCT DIA. 32.65 mm PITCH
7353 008.300	8.30 mm	415.00 mm	GC100S	30°	3.60 mm B.C. 1.25 mm DUCT DIA. 43.53 mm PITCH
7353 010.300	10.30 mm	415.00 mm	GC100S	30°	4.80 mm B.C. 1.40 mm DUCT DIA. 54.41 mm PITCH
7353 011.300	11.30 mm	415.00 mm	GC100S	30°	5.30 mm B.C. 1.40 mm DUCT DIA. 59.86 mm PITCH
7353 012.300	12.30 mm	415.00 mm	GC100S	30°	6.25 mm B.C. 1.55 mm DUCT DIA. 65.30 mm PITCH
7353 014.300	14.30 mm	415.00 mm	GC100S	30°	6.70 mm B.C. 1.90 mm DUCT DIA. 76.18 mm PITCH
7353 016.300	16.30 mm	415.00 mm	GC100S	30°	8.00 mm B.C. 2.10 mm DUCT DIA. 87.06 mm PITCH
7353 018.300	18.30 mm	415.00 mm	GC100S	30°	9.00 mm B.C. 2.30 mm DUCT DIA. 97.95 mm PITCH
7353 020.300	20.30 mm	415.00 mm	GC100S	30°	10.00 mm B.C. 2.50 mm DUCT DIA. 108.83 mm PITCH
7353 025.300	25.30 mm	415.00 mm	GC100S	30°	12.00 mm B.C. 2.50 mm DUCT DIA. 136.03 mm PITCH
7353 027.300	27.30 mm	415.00 mm	GC100S	30°	14.30 mm B.C. 2.50 mm DUCT DIA. 146.92 mm PITCH
7353 032.300	32.30 mm	415.00 mm	GC100S	30°	17.20 mm B.C. 3.00 mm DUCT DIA. 174.12 mm PITCH
7370 006.300	6.30 mm	330.00 mm	GC080S	30°	2.60 mm B.C. 0.70 mm DUCT DIA. 32.65 mm PITCH
7370 006.303	6.30 mm	330.00 mm	GC080S	30°	1.60 mm B.C. 0.50 mm DUCT DIA. 32.65 mm PITCH
7370 008.300	8.30 mm	330.00 mm	GC080S	30°	3.60 mm B.C. 1.25 mm DUCT DIA. 43.53 mm PITCH
7370 010.300	10.30 mm	330.00 mm	GC080S	30°	4.80 mm B.C. 1.40 mm DUCT DIA. 54.41 mm PITCH
7370 012.300	12.30 mm	330.00 mm	GC080S	30°	6.25 mm B.C. 1.55 mm DUCT DIA. 65.30 mm PITCH
7370 014.300	14.30 mm	330.00 mm	GC080S	30°	6.70 mm B.C. 1.90 mm DUCT DIA. 76.18 mm PITCH
7370 016.300	16.30 mm	330.00 mm	GC080S	30°	8.00 mm B.C. 2.10 mm DUCT DIA. 87.06 mm PITCH
7370 018.300	18.30 mm	330.00 mm	GC080S	30°	9.00 mm B.C. 2.30 mm DUCT DIA. 97.95 mm PITCH
7940 003.300	3.30 mm	330.00 mm	GC100S	30°	1.60 mm B.C. 0.40 mm DUCT DIA. 16.30 mm PITCH
7940 003.800	3.80 mm	330.00 mm	GC100S	30°	1.80 mm B.C. 0.50 mm DUCT DIA. 19.04 mm PITCH
7940 004.300	4.30 mm	330.00 mm	GC100S	30°	2.10 mm B.C. 0.60 mm DUCT DIA. 21.77 mm PITCH
7940 004.800	4.80 mm	330.00 mm	GC100S	30°	2.30 mm B.C. 0.70 mm DUCT DIA. 24.49 mm PITCH
7940 005.300	5.30 mm	330.00 mm	GC100S	30°	2.60 mm B.C. 0.70 mm DUCT DIA. 27.21 mm PITCH
7940 005.800	5.80 mm	330.00 mm	GC100S	30°	2.60 mm B.C. 0.70 mm DUCT DIA. 29.93 mm PITCH

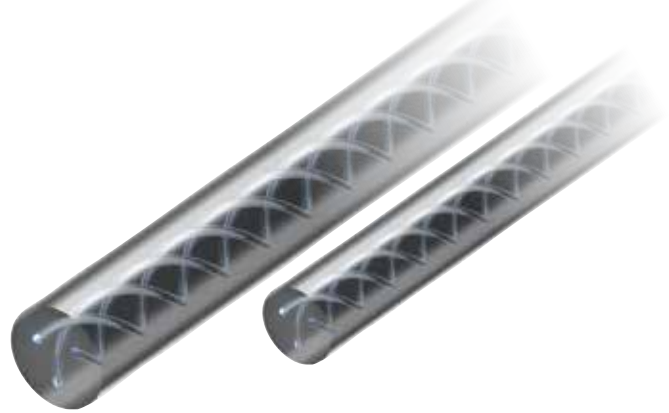
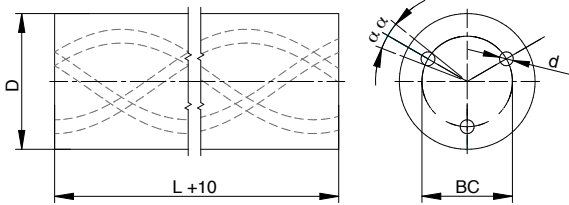
Item No.	Dia	OAL	Grade	Helix	Details
7940 006.300	6.30 mm	330.00 mm	GC100S	30°	2.60 mm B.C. 0.70 mm DUCT DIA. 32.65 mm PITCH
7940 006.301	6.30 mm	330.00 mm	GC100S	30°	2.00 mm B.C. 0.80 mm DUCT DIA. 32.65 mm PITCH
7940 006.800	6.80 mm	330.00 mm	GC100S	30°	3.50 mm B.C. 1.00 mm DUCT DIA. 35.37 mm PITCH
7940 007.300	7.30 mm	330.00 mm	GC100S	30°	3.50 mm B.C. 1.00 mm DUCT DIA. 38.09 mm PITCH
7940 007.800	7.80 mm	330.00 mm	GC100S	30°	3.50 mm B.C. 1.00 mm DUCT DIA. 40.81 mm PITCH
7940 008.300	8.30 mm	330.00 mm	GC100S	30°	3.60 mm B.C. 1.25 mm DUCT DIA. 43.53 mm PITCH
7940 008.800	8.80 mm	330.00 mm	GC100S	30°	3.60 mm B.C. 1.25 mm DUCT DIA. 46.25 mm PITCH
7940 009.300	9.30 mm	330.00 mm	GC100S	30°	4.80 mm B.C. 1.40 mm DUCT DIA. 48.97 mm PITCH
7940 009.800	9.80 mm	330.00 mm	GC100S	30°	4.80 mm B.C. 1.40 mm DUCT DIA. 51.69 mm PITCH
7940 010.300	10.30 mm	330.00 mm	GC100S	30°	4.80 mm B.C. 1.40 mm DUCT DIA. 54.41 mm PITCH
7940 010.301	10.30 mm	330.00 mm	GC100S	30°	4.80 mm B.C. 0.90 mm DUCT DIA. 54.41 mm PITCH
7940 010.800	10.80 mm	330.00 mm	GC100S	30°	4.80 mm B.C. 1.40 mm DUCT DIA. 57.13 mm PITCH
7940 011.300	11.30 mm	330.00 mm	GC100S	30°	5.30 mm B.C. 1.40 mm DUCT DIA. 59.86 mm PITCH
7940 011.800	11.80 mm	330.00 mm	GC100S	30°	5.80 mm B.C. 1.40 mm DUCT DIA. 62.58 mm PITCH
7940 012.300	12.30 mm	330.00 mm	GC100S	30°	6.25 mm B.C. 1.55 mm DUCT DIA. 65.30 mm PITCH
7940 012.301	12.30 mm	330.00 mm	GC100S	30°	5.40 mm B.C. 1.50 mm DUCT DIA. 65.30 mm PITCH
7940 012.800	12.80 mm	330.00 mm	GC100S	30°	6.25 mm B.C. 1.55 mm DUCT DIA. 68.02 mm PITCH
7940 013.300	13.30 mm	330.00 mm	GC100S	30°	6.50 mm B.C. 1.75 mm DUCT DIA. 70.74 mm PITCH
7940 013.800	13.80 mm	330.00 mm	GC100S	30°	6.50 mm B.C. 1.75 mm DUCT DIA. 73.46 mm PITCH
7940 014.300	14.30 mm	330.00 mm	GC100S	30°	6.70 mm B.C. 1.90 mm DUCT DIA. 76.18 mm PITCH
7940 014.800	14.80 mm	330.00 mm	GC100S	30°	6.70 mm B.C. 1.90 mm DUCT DIA. 78.90 mm PITCH
7940 015.300	15.30 mm	330.00 mm	GC100S	30°	7.40 mm B.C. 1.90 mm DUCT DIA. 81.62 mm PITCH
7940 016.300	16.30 mm	330.00 mm	GC100S	30°	8.00 mm B.C. 2.10 mm DUCT DIA. 87.06 mm PITCH
7940 016.800	16.80 mm	330.00 mm	GC100S	30°	8.00 mm B.C. 2.10 mm DUCT DIA. 89.78 mm PITCH
7940 017.300	17.30 mm	330.00 mm	GC100S	30°	8.00 mm B.C. 2.10 mm DUCT DIA. 92.50 mm PITCH
7940 017.800	17.80 mm	330.00 mm	GC100S	30°	8.00 mm B.C. 2.10 mm DUCT DIA. 95.22 mm PITCH
7940 018.300	18.30 mm	330.00 mm	GC100S	30°	9.00 mm B.C. 2.30 mm DUCT DIA. 97.95 mm PITCH
7940 018.800	18.80 mm	330.00 mm	GC100S	30°	9.00 mm B.C. 2.30 mm DUCT DIA. 100.67 mm PITCH
7940 019.300	19.30 mm	330.00 mm	GC100S	30°	9.00 mm B.C. 2.30 mm DUCT DIA. 103.39 mm PITCH
7940 020.300	20.30 mm	330.00 mm	GC100S	30°	10.00 mm B.C. 2.50 mm DUCT DIA. 108.83 mm PITCH
7940 021.300	21.30 mm	330.00 mm	GC100S	30°	10.00 mm B.C. 2.50 mm DUCT DIA. 114.27 mm PITCH
7940 022.300	22.30 mm	330.00 mm	GC100S	30°	10.00 mm B.C. 2.50 mm DUCT DIA. 119.71 mm PITCH
7940 023.300	23.30 mm	330.00 mm	GC100S	30°	12.00 mm B.C. 2.50 mm DUCT DIA. 125.15 mm PITCH
7940 024.300	24.30 mm	330.00 mm	GC100S	30°	12.00 mm B.C. 2.50 mm DUCT DIA. 130.59 mm PITCH
7940 025.300	25.30 mm	330.00 mm	GC100S	30°	12.00 mm B.C. 2.50 mm DUCT DIA. 136.03 mm PITCH
7940 026.300	26.30 mm	330.00 mm	GC100S	30°	12.00 mm B.C. 2.50 mm DUCT DIA. 141.48 mm PITCH
7940 027.300	27.30 mm	330.00 mm	GC100S	30°	14.30 mm B.C. 2.50 mm DUCT DIA. 146.92 mm PITCH
7940 028.300	28.30 mm	330.00 mm	GC100S	30°	14.80 mm B.C. 2.50 mm DUCT DIA. 152.36 mm PITCH
7940 029.300	29.30 mm	330.00 mm	GC100S	30°	15.40 mm B.C. 2.50 mm DUCT DIA. 157.80 mm PITCH
7940 030.300	30.30 mm	330.00 mm	GC100S	30°	16.00 mm B.C. 2.50 mm DUCT DIA. 163.24 mm PITCH
7940 032.300	32.30 mm	330.00 mm	GC100S	30°	17.20 mm B.C. 3.00 mm DUCT DIA. 174.12 mm PITCH
7385 006.300	6.30 mm	415.00 mm	GC100S	40°	2.20 mm B.C. 0.50 mm DUCT DIA. 22.46 mm PITCH
7385 010.300	10.30 mm	415.00 mm	GC100S	40°	3.50 mm B.C. 0.80 mm DUCT DIA. 37.44 mm PITCH
7385 012.300	12.30 mm	415.00 mm	GC100S	40°	4.20 mm B.C. 0.90 mm DUCT DIA. 44.93 mm PITCH
7385 014.300	14.30 mm	415.00 mm	GC100S	40°	4.70 mm B.C. 1.00 mm DUCT DIA. 52.42 mm PITCH
7385 016.300	16.30 mm	415.00 mm	GC100S	40°	5.50 mm B.C. 1.20 mm DUCT DIA. 59.90 mm PITCH
7385 018.300	18.30 mm	415.00 mm	GC100S	40°	6.30 mm B.C. 1.40 mm DUCT DIA. 67.39 mm PITCH
7385 020.300	20.30 mm	415.00 mm	GC100S	40°	7.10 mm B.C. 1.50 mm DUCT DIA. 74.88 mm PITCH
7385 025.300	25.30 mm	415.00 mm	GC100S	40°	8.10 mm B.C. 1.75 mm DUCT DIA. 93.60 mm PITCH
7397 008.300	8.30 mm	330.00 mm	GC080S	40°	2.70 mm B.C. 0.65 mm DUCT DIA. 29.95 mm PITCH
7397 010.300	10.30 mm	330.00 mm	GC080S	40°	3.50 mm B.C. 0.80 mm DUCT DIA. 37.44 mm PITCH
7397 012.300	12.30 mm	330.00 mm	GC080S	40°	4.20 mm B.C. 0.90 mm DUCT DIA. 44.93 mm PITCH
7397 014.30	14.30 mm	330.00 mm	GC080S	40°	4.70 mm B.C. 1.00 mm DUCT DIA. 52.42 mm PITCH
7935 006.300	6.30 mm	330.00 mm	GC100S	40°	2.20 mm B.C. 0.50 mm DUCT DIA. 22.46 mm PITCH
7935 006.302	6.30 mm	330.00 mm	GC100S	40°	1.40 mm B.C. 0.40 mm DUCT DIA. 22.46 mm PITCH
7935 006.800	6.80 mm	330.00 mm	GC100S	40°	2.30 mm B.C. 0.50 mm DUCT DIA. 24.34 mm PITCH
7935 007.300	7.30 mm	330.00 mm	GC100S	40°	2.40 mm B.C. 0.65 mm DUCT DIA. 26.21 mm PITCH
7935 008.300	8.30 mm	330.00 mm	GC100S	40°	2.70 mm B.C. 0.65 mm DUCT DIA. 29.95 mm PITCH
7935 008.301	8.30 mm	330.00 mm	GC100S	40°	1.70 mm B.C. 0.40 mm DUCT DIA. 29.95 mm PITCH
7935 008.800	8.80 mm	330.00 mm	GC100S	40°	2.90 mm B.C. 0.65 mm DUCT DIA. 31.82 mm PITCH
7935 009.300	9.30 mm	330.00 mm	GC100S	40°	3.20 mm B.C. 0.75 mm DUCT DIA. 33.70 mm PITCH

Item No.	Dia	OAL	Grade	Helix	Details
7935 009.800	9.80 mm	330.00 mm	GC100S	40°	3.50 mm B.C. 0.75 mm DUCT DIA. 35.57 mm PITCH
7935 010.300	10.30 mm	330.00 mm	GC100S	40°	3.50 mm B.C. 0.80 mm DUCT DIA. 37.44 mm PITCH
7935 010.301	10.30 mm	330.00 mm	GC100S	40°	2.10 mm B.C. 0.50 mm DUCT DIA. 37.44 mm PITCH
7935 010.800	10.80 mm	330.00 mm	GC100S	40°	3.50 mm B.C. 0.80 mm DUCT DIA. 39.31 mm PITCH
7935 011.300	11.30 mm	330.00 mm	GC100S	40°	3.70 mm B.C. 0.80 mm DUCT DIA. 41.18 mm PITCH
7935 011.800	11.80 mm	330.00 mm	GC100S	40°	4.00 mm B.C. 0.85 mm DUCT DIA. 43.06 mm PITCH
7935 012.300	12.30 mm	330.00 mm	GC100S	40°	4.20 mm B.C. 0.90 mm DUCT DIA. 44.93 mm PITCH
7935 012.301	12.30 mm	330.00 mm	GC100S	40°	2.50 mm B.C. 0.60 mm DUCT DIA. 44.93 mm PITCH
7935 012.800	12.80 mm	330.00 mm	GC100S	40°	4.35 mm B.C. 0.90 mm DUCT DIA. 46.80 mm PITCH
7935 013.300	13.30 mm	330.00 mm	GC100S	40°	4.40 mm B.C. 0.90 mm DUCT DIA. 48.67 mm PITCH
7935 014.300	14.30 mm	330.00 mm	GC100S	40°	4.70 mm B.C. 1.00 mm DUCT DIA. 52.42 mm PITCH
7935 014.301	14.30 mm	330.00 mm	GC100S	40°	2.90 mm B.C. 0.70 mm DUCT DIA. 52.42 mm PITCH
7935 014.800	14.80 mm	330.00 mm	GC100S	40°	4.90 mm B.C. 1.10 mm DUCT DIA. 54.29 mm PITCH
7935 015.300	15.30 mm	330.00 mm	GC100S	40°	5.10 mm B.C. 1.10 mm DUCT DIA. 56.16 mm PITCH
7935 016.300	16.30 mm	330.00 mm	GC100S	40°	5.50 mm B.C. 1.20 mm DUCT DIA. 59.90 mm PITCH
7935 016.301	16.30 mm	330.00 mm	GC100S	40°	3.30 mm B.C. 0.80 mm DUCT DIA. 59.90 mm PITCH
7935 016.800	16.80 mm	330.00 mm	GC100S	40°	5.75 mm B.C. 1.20 mm DUCT DIA. 61.78 mm PITCH
7935 017.300	17.30 mm	330.00 mm	GC100S	40°	5.90 mm B.C. 1.20 mm DUCT DIA. 63.65 mm PITCH
7935 018.300	18.30 mm	330.00 mm	GC100S	40°	6.30 mm B.C. 1.40 mm DUCT DIA. 67.39 mm PITCH
7935 018.301	18.30 mm	330.00 mm	GC100S	40°	3.70 mm B.C. 0.90 mm DUCT DIA. 67.39 mm PITCH
7935 019.300	19.30 mm	330.00 mm	GC100S	40°	6.70 mm B.C. 1.40 mm DUCT DIA. 71.14 mm PITCH
7935 020.300	20.30 mm	330.00 mm	GC100S	40°	7.10 mm B.C. 1.50 MM DUCT DIA. 74.88 mm PITCH
7935 020.301	20.30 mm	330.00 mm	GC100S	40°	4.10 mm B.C. 1.00 MM DUCT DIA. 74.88 mm PITCH
7935 021.300	21.30 mm	330.00 mm	GC100S	40°	7.40 mm B.C. 1.50 mm DUCT DIA. 78.62 mm PITCH
7935 022.300	22.30 mm	330.00 mm	GC100S	40°	7.70 mm B.C. 1.70 mm DUCT DIA. 82.37 mm PITCH
7935 024.300	24.30 mm	330.00 mm	GC100S	40°	8.00 mm B.C. 1.75 mm DUCT DIA. 89.86 mm PITCH
7935 025.300	25.30 mm	330.00 mm	GC100S	40°	8.10 mm B.C. 1.75 mm DUCT DIA. 93.60 mm PITCH
7935 025.301	25.30 mm	330.00 mm	GC100S	40°	5.10 mm B.C. 1.30 mm DUCT DIA. 93.60 mm PITCH
7935 026.300	26.30 mm	330.00 mm	GC100S	40°	8.20 mm B.C. 1.75 mm DUCT DIA. 97.34 mm PITCH
7935 028.300	28.30 mm	330.00 mm	GC100S	40°	9.00 mm B.C. 2.00 mm DUCT DIA. 104.83 mm PITCH
7935 030.300	30.30 mm	330.00 mm	GC100S	40°	10.00mm B.C. 2.00 mm DUCT DIA. 112.32 mm PITCH
7935 032.300	32.30 mm	330.00 mm	GC100S	40°	11.00 mm B.C. 2.00 mm DUCT DIA. 119.81 mm PITCH
7935 032.301	32.30 mm	330.00 mm	GC100S	40°	6.00mm B.C. 1.60 mm DUCT DIA. 119.81 mm PITCH



Item No.	Dia	OAL	Grade	Details
7301 004.200	4.20 mm	330.00 mm	GC100S	STANDARD PITCH CIRCLE 1.80 mm B.C. 0.80 mm DUCT DIA
7301 005.200	5.20 mm	330.00 mm	GC100S	STANDARD PITCH CIRCLE 2.00 mm B.C. 0.80 mm DUCT DIA
7301 006.300	6.30 mm	330.00 mm	GC100S	DECREASED PITCH CIRCLE 1.50 mm B.C. 0.80 mm DUCT DIA
7301 006.301	6.30 mm	330.00 mm	GC100S	STANDARD PITCH CIRCLE 3.00 mm B.C. 1.00 mm DUCT DIA
7301 006.302	6.30 mm	330.00 mm	GC100S	DECREASED PITCH CIRCLE 1.50 mm B.C. 0.60 mm DUCT DIA
7301 006.303	6.30 mm	330.00 mm	GC100S	DECREASED PITCH CIRCLE 1.55 mm B.C. 0.65 mm DUCT DIA
7301 006.304	6.30 mm	330.00 mm	GC100S	DECREASED PITCH CIRCLE 1.70 mm B.C. 0.70 mm DUCT DIA
7301 006.305	6.30 mm	330.00 mm	GC100S	DECREASED PITCH CIRCLE 2.00 mm B.C. 0.80 mm DUCT DIA
7301 006.306	6.30 mm	330.00 mm	GC100S	DECREASED PITCH CIRCLE 2.40 mm B.C. 1.00 mm DUCT DIA.
7301 007.300	7.30 mm	330.00 mm	GC100S	DECREASED PITCH CIRCLE 1.80 mm B.C. 0.80 mm DUCT DIA.
7301 007.301	7.30 mm	330.00 mm	GC100S	STANDARD PITCH CIRCLE 3.50 mm B.C. 1.00 mm DUCT DIA
7301 008.300	8.30 mm	330.00 mm	GC100S	DECREASED PITCH CIRCLE 1.50 mm B.C. 0.80 mm DUCT DIA.
7301 008.301	8.30 mm	330.00 mm	GC100S	DECREASED PITCH CIRCLE 2.60 mm B.C. 1.00 mm DUCT DIA.
7301 008.302	8.30 mm	330.00 mm	GC100S	STANDARD PITCH CIRCLE 4.00 mm B.C. 1.00 mm DUCT DIA.
7301 008.303	8.30 mm	330.00 mm	GC100S	DECREASED PITCH CIRCLE 2.00 mm B.C. 0.80 mm DUCT DIA.
7301 009.300	9.30 mm	330.00 mm	GC100S	DECREASED PITCH CIRCLE 2.60 mm B.C. 1.00 mm DUCT DIA.
7301 009.301	9.30 mm	330.00 mm	GC100S	STANDARD PITCH CIRCLE 4.00 mm B.C. 1.40 mm DUCT DIA.
7301 010.300	10.30 mm	330.00 mm	GC100S	DECREASED PITCH CIRCLE 2.60 mm B.C. 1.00 mm DUCT DIA.
7301 010.301	10.30 mm	330.00 mm	GC100S	STANDARD PITCH CIRCLE 5.00 mm B.C. 1.40 mm DUCT DIA.
7301 010.302	10.30 mm	330.00 mm	GC100S	STANDARD PITCH CIRCLE 3.50 mm B.C. 1.20 mm DUCT DIA
7301 011.300	11.30 mm	330.00 mm	GC100S	DECREASED PITCH CIRCLE 3.50 mm B.C. 1.20 mm DUCT DIA.
7301 011.301	11.30 mm	330.00 mm	GC100S	STANDARD PITCH CIRCLE 5.00 mm B.C. 1.40 mm DUCT DIA.
7301 012.300	12.30 mm	330.00 mm	GC100S	DECREASED PITCH CIRCLE 3.50 mm B.C. 1.20 mm DUCT DIA.
7301 012.301	12.30 mm	330.00 mm	GC100S	STANDARD PITCH CIRCLE 6.00 mm B.C. 1.75 mm DUCT DIA.
7301 013.300	13.30 mm	330.00 mm	GC100S	DECREASED PITCH CIRCLE 3.50 mm B.C. 1.20 mm DUCT DIA.
7301 013.301	13.30 mm	330.00 mm	GC100S	STANDARD PITCH CIRCLE 6.00 mm B.C. 1.75 mm DUCT DIA.
7301 014.300	14.30 mm	330.00 mm	GC100S	DECREASED PITCH CIRCLE 5.00 mm B.C. 1.50 mm DUCT DIA
7301 014.301	14.30 mm	330.00 mm	GC100S	STANDARD PITCH CIRCLE 7.00 mm B.C. 1.75 mm DUCT DIA.
7301 015.300	15.30 mm	330.00 mm	GC100S	DECREASED PITCH CIRCLE 5.00 mm B.C. 1.50 mm DUCT DIA.
7301 015.301	15.30 mm	330.00 mm	GC100S	STANDARD PITCH CIRCLE 7.00 mm B.C. 2.00 mm DUCT DIA.
7301 016.300	16.30 mm	330.00 mm	GC100S	DECREASED PITCH CIRCLE 5.00 mm B.C. 1.50 mm DUCT DIA.
7301 016.301	16.30 mm	330.00 mm	GC100S	STANDARD PITCH CIRCLE 8.00 mm B.C. 2.00 mm DUCT DIA.
7301 017.300	17.30 mm	330.00 mm	GC100S	DECREASED PITCH CIRCLE 6.20 mm B.C. 2.00 mm DUCT DIA
7301 017.301	17.30 mm	330.00 mm	GC100S	STANDARD PITCH CIRCLE 8.00 mm B.C. 2.00 mm DUCT DIA.
7301 018.300	18.30 mm	330.00 mm	GC100S	DECREASED PITCH CIRCLE 6.20 mm B.C. 2.00 mm DUCT DIA.
7301 018.301	18.30 mm	330.00 mm	GC100S	STANDARD PITCH CIRCLE 9.00 mm B.C. 2.00 mm DUCT DIA.
7301 019.300	19.30 mm	330.00 mm	GC100S	DECREASED PITCH CIRCLE 6.20 mm B.C. 2.00 mm DUCT DIA.
7301 019.301	19.30 mm	330.00 mm	GC100S	STANDARD PITCH CIRCLE 9.00 mm B.C. 2.00 mm DUCT DIA.
7301 020.400	20.40 mm	330.00 mm	GC100S	DECREASED PITCH CIRCLE 6.20 mm B.C. 2.00 mm DUCT DIA
7301 020.401	20.40 mm	330.00 mm	GC100S	STANDARD PITCH CIRCLE 10.00 mm B.C. 2.50 mm DUCT DIA.
7301 020.402	20.00 mm	330.00 mm	GC100S	DECREASED PITCH CIRCLE 3.50 mm B.C. 1.50 mm DUCT DIA
7301 021.400	21.40 mm	330.00 mm	GC100S	DECREASED PITCH CIRCLE 6.20 mm B.C. 2.00 mm DUCT DIA.
7301 021.401	21.40 mm	330.00 mm	GC100S	STANDARD PITCH CIRCLE 10.00 mm B.C. 2.50 mm DUCT DIA.
7301 022.400	22.40 mm	330.00 mm	GC100S	DECREASED PITCH CIRCLE 6.20 mm B.C. 2.00 mm DUCT DIA.
7301 022.401	22.40 mm	330.00 mm	GC100S	STANDARD PITCH CIRCLE 11.00 mm B.C. 2.50 mm DUCT DIA.
7301 023.400	23.40 mm	330.00 mm	GC100S	DECREASED PITCH CIRCLE 7.50 mm B.C. 2.00 mm DUCT DIA.

Item No.	Dia	OAL	Grade	Details
7301 023.401	23.40 mm	330.00 mm	GC100S	STANDARD PITCH CIRCLE 11.00 mm B.C. 2.50 mm DUCT DIA.
7301 024.400	24.40 mm	330.00 mm	GC100S	DECREASED PITCH CIRCLE 7.50 mm B.C. 2.00 mm DUCT DIA.
7301 024.401	24.40 mm	330.00 mm	GC100S	STANDARD PITCH CIRCLE 12.00 mm B.C. 3.00 mm DUCT DIA.
7301 025.400	25.40 mm	330.00 mm	GC100S	DECREASED PITCH CIRCLE 7.50 mm B.C. 2.00 mm DUCT DIA.
7301 025.401	25.40 mm	330.00 mm	GC100S	STANDARD PITCH CIRCLE 12.00 mm B.C. 3.00 mm DUCT DIA.
7301 026.400	26.40 mm	330.00 mm	GC100S	DECREASED PITCH CIRCLE 7.50 mm B.C. 2.00 mm DUCT DIA.
7301 026.401	26.40 mm	330.00 mm	GC100S	STANDARD PITCH CIRCLE 13.00 mm B.C. 3.00 mm DUCT DIA.
7301 028.400	28.40 mm	330.00 mm	GC100S	DECREASED PITCH CIRCLE 9.00 mm B.C. 2.50 mm DUCT DIA.
7301 028.401	28.40 mm	330.00 mm	GC100S	STANDARD PITCH CIRCLE 14.00 mm B.C. 3.00 mm DUCT DIA.
7301 030.400	30.40 mm	330.00 mm	GC100S	DECREASED PITCH CIRCLE 9.00 mm B.C. 2.50 mm DUCT DIA.
7301 030.401	30.40 mm	330.00 mm	GC100S	STANDARD PITCH CIRCLE 14.00 mm B.C. 3.00 mm DUCT DIA.
7301 032.400	32.40 mm	330.00 mm	GC100S	DECREASED PITCH CIRCLE 9.00 mm B.C. 2.50 mm DUCT DIA.
7301 032.401	32.40 mm	330.00 mm	GC100S	STANDARD PITCH CIRCLE 14.00 mm B.C. 3.00 mm DUCT DIA.
7309 006.300	6.30 mm	415.00 mm	GC100S	DECREASED PITCH CIRCLE 1.50 mm B.C. 0.80 mm DUCT DIA.
7309 006.301	6.30 mm	415.00 mm	GC100S	STANDARD PITCH CIRCLE 3.00 mm B.C. 1.00 mm DUCT DIA.
7309 008.300	8.30 mm	415.00 mm	GC100S	DECREASED PITCH CIRCLE 1.50 mm B.C. 0.80 mm DUCT DIA.
7309 008.301	8.30 mm	415.00 mm	GC100S	DECREASED PITCH CIRCLE 2.60 mm B.C. 1.00 mm DUCT DIA.
7309 008.302	8.30 mm	415.00 mm	GC100S	STANDARD PITCH CIRCLE 4.00 mm B.C. 1.00 mm DUCT DIA.
7309 010.300	10.30 mm	415.00 mm	GC100S	DECREASED PITCH CIRCLE 2.60 mm B.C. 1.00 mm DUCT DIA.
7309 010.301	10.30 mm	415.00 mm	GC100S	STANDARD PITCH CIRCLE 5.00 mm B.C. 1.40 mm DUCT DIA.
7309 012.300	12.30 mm	415.00 mm	GC100S	DECREASED PITCH CIRCLE 3.50 mm B.C. 1.20 mm DUCT DIA.
7309 012.301	12.30 mm	415.00 mm	GC100S	STANDARD PITCH CIRCLE 6.00 mm B.C. 1.75 mm DUCT DIA.
7309 014.300	14.30 mm	415.00 mm	GC100S	DECREASED PITCH CIRCLE 5.00 mm B.C. 1.50 mm DUCT DIA.
7309 014.301	14.30 mm	415.00 mm	GC100S	STANDARD PITCH CIRCLE 7.00 mm B.C. 1.75 mm DUCT DIA.
7309 016.300	16.30 mm	415.00 mm	GC100S	DECREASED PITCH CIRCLE 5.00 mm B.C. 1.50 mm DUCT DIA.
7309 016.301	16.30 mm	415.00 mm	GC100S	STANDARD PITCH CIRCLE 8.00 mm B.C. 2.00 mm DUCT DIA.
7309 018.300	18.30 mm	415.00 mm	GC100S	DECREASED PITCH CIRCLE 6.20 mm B.C. 2.00 mm DUCT DIA.
7309 018.301	18.30 mm	415.00 mm	GC100S	STANDARD PITCH CIRCLE 9.00 mm B.C. 2.00 mm DUCT DIA.
7309 020.400	20.40 mm	415.00 mm	GC100S	DECREASED PITCH CIRCLE 6.20 mm B.C. 2.00 mm DUCT DIA.
7309 020.401	20.40 mm	415.00 mm	GC100S	STANDARD PITCH CIRCLE 10.00 mm B.C. 2.50 mm DUCT DIA.
7309 025.400	25.40 mm	415.00 mm	GC100S	DECREASED PITCH CIRCLE 7.50 mm B.C. 2.00 mm DUCT DIA.
7309 025.401	25.40 mm	415.00 mm	GC100S	STANDARD PITCH CIRCLE 12.00 mm B.C. 3.00 mm DUCT DIA.
7309 032.400	32.40 mm	415.00 mm	GC100S	DECREASED PITCH CIRCLE 9.00 mm B.C. 2.50 mm DUCT DIA.
7401 010.303	10.30 mm	330.00 mm	GC080S	STANDARD PITCH CIRCLE 1.70 mm B.C. 0.80 mm DUCT DIA.
7401 012.300	12.30 mm	330.00 mm	GC080S	DECREASED PITCH CIRCLE 3.50 mm B.C. 1.20 mm DUCT DIA.
7401 014.301	14.30 mm	330.00 mm	GC080S	STANDARD PITCH CIRCLE 7.00 mm B.C. 1.75 mm DUCT DIA.

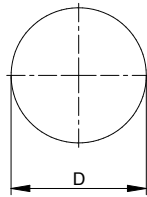
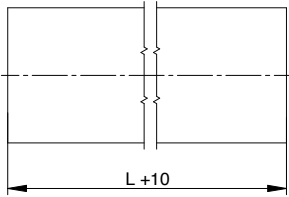
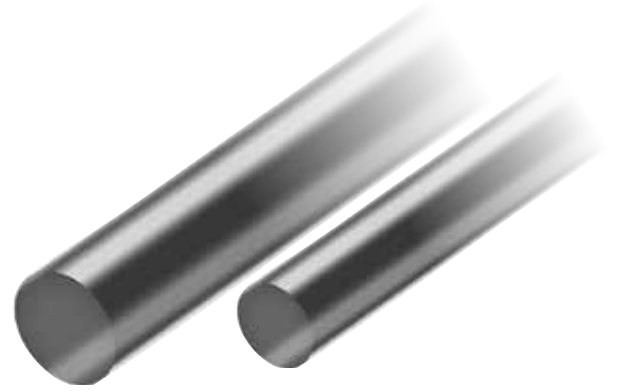


Item No.	Dia	OAL	Grade	Details
7383 008.300	8.30 mm	415.00 mm	GC100S	4.00 mm B.C. 0.70 mm DUCT DIA. 43.53 mm PITCH
7383 010.300	10.30 mm	415.00 mm	GC100S	5.10 mm B.C. 0.85 mm DUCT DIA. 54.41 mm PITCH
7383 012.300	12.30 mm	415.00 mm	GC100S	6.30 mm B.C. 1.10 mm DUCT DIA. 65.30 mm PITCH
7383 016.300	16.30 mm	415.00 mm	GC100S	8.30 mm B.C. 1.60 mm DUCT DIA. 87.06 mm PITCH
7383 018.300	18.30 mm	415.00 mm	GC100S	9.50 mm B.C. 1.70 mm DUCT DIA. 97.95 mm PITCH
7383 020.300	20.30 mm	415.00 mm	GC100S	10.20 mm B.C. 1.90 mm DUCT DIA. 108.83 mm PITCH
7383 025.300	25.30 mm	415.00 mm	GC100S	12.50 mm B.C. 2.00mm DUCT DIA. 136.03 mm PITCH
7384 014.300	14.30 mm	415.00 mm	GC100S	4.70 mm B.C. 1.00 mm DUCT DIA. 52.42 mm PITCH
7384 020.300	20.30 mm	415.00 mm	GC100S	7.10 mm B.C. 1.50 mm DUCT DIA. 74.88 mm PITCH
7384 025.300	25.30 mm	415.00 mm	GC100S	8.10 mm B.C. 1.75 mm DUCT DIA. 93.60 mm PITCH
7384 032.300	32.30 mm	415.00 mm	GC100S	11.00 mm B.C. 2.00 mm DUCT DIA. 119.81 mm PITCH
7933 006.300	6.30 mm	330.00 mm	GC100S	2.90 mm B.C. 0.50 mm DUCT DIA. 32.65 mm PITCH
7933 006.800	6.80 mm	330.00 mm	GC100S	2.90 mm B.C. 0.50 mm DUCT DIA. 35.37 mm PITCH
7933 007.300	7.30 mm	330.00 mm	GC100S	4.00 mm B.C. 0.65 mm DUCT DIA. 38.09 mm PITCH
7933 008.300	8.30 mm	330.00 mm	GC100S	4.00 mm B.C. 0.70 mm DUCT DIA. 43.53 mm PITCH
7933 008.800	8.80 mm	330.00 mm	GC100S	4.00 mm B.C. 0.70 mm DUCT DIA. 46.25 mm PITCH
7933 009.300	9.30 mm	330.00 mm	GC100S	5.10 mm B.C. 0.85 mm DUCT DIA. 48.97 mm PITCH
7933 009.800	9.80 mm	330.00 mm	GC100S	5.10 mm B.C. 0.85 mm DUCT DIA. 51.69 mm PITCH
7933 010.300	10.30 mm	330.00 mm	GC100S	5.10 mm B.C. 0.85 mm DUCT DIA. 54.41 mm PITCH
7933 010.800	10.80 mm	330.00 mm	GC100S	5.10 mm B.C. 0.85 mm DUCT DIA. 57.13 mm PITCH
7933 011.300	11.30 mm	330.00 mm	GC100S	5.70 mm B.C. 1.10 mm DUCT DIA. 59.86 mm PITCH
7933 011.800	11.80 mm	330.00 mm	GC100S	6.10 mm B.C. 1.10 mm DUCT DIA. 62.58 mm PITCH
7933 012.300	12.30 mm	330.00 mm	GC100S	6.30 mm B.C. 1.10 mm DUCT DIA. 65.30 mm PITCH
7933 012.800	12.80 mm	330.00 mm	GC100S	6.30 mm B.C. 1.10 mm DUCT DIA. 68.02 mm PITCH
7933 013.300	13.30 mm	330.00 mm	GC100S	6.80 mm B.C. 1.20 mm DUCT DIA. 70.74 mm PITCH
7933 014.300	14.30 mm	330.00 mm	GC100S	7.30 mm B.C. 1.40 mm DUCT DIA. 76.18 mm PITCH
7933 014.800	14.80 mm	330.00 mm	GC100S	7.60 mm B.C. 1.40 mm DUCT DIA. 78.90 mm PITCH
7933 015.300	15.30 mm	330.00 mm	GC100S	7.80 mm B.C. 1.40 mm DUCT DIA. 81.62 mm PITCH
7933 016.300	16.30 mm	330.00 mm	GC100S	8.30 mm B.C. 1.60 mm DUCT DIA. 87.06 mm PITCH
7933 016.800	16.80 mm	330.00 mm	GC100S	8.30 mm B.C. 1.60 mm DUCT DIA. 89.78 mm PITCH
7933 017.300	17.30 mm	330.00 mm	GC100S	8.60 mm B.C. 1.60 mm DUCT DIA. 92.50 mm PITCH
7933 018.300	18.30 mm	330.00 mm	GC100S	9.50 mm B.C. 1.70 mm DUCT DIA. 97.95 mm PITCH
7933 018.800	18.80 mm	330.00 mm	GC100S	9.50 mm B.C. 1.70 mm DUCT DIA. 100.67 mm PITCH
7933 019.300	19.30 mm	330.00 mm	GC100S	10.20 mm B.C. 1.70 mm DUCT DIA. 103.39 mm PITCH
7933 020.300	20.30 mm	330.00 mm	GC100S	10.20 mm B.C. 1.90 mm DUCT DIA. 108.83 mm PITCH
7933 021.300	21.30 mm	330.00 mm	GC100S	11.10 mm B.C. 2.00 mm DUCT DIA. 114.27 mm PITCH
7933 022.300	22.30 mm	330.00 mm	GC100S	11.50 mm B.C. 2.00 mm DUCT DIA. 119.71 mm PITCH
7933 023.300	23.30 mm	330.00 mm	GC100S	11.80 mm B.C. 2.00 mm DUCT DIA. 125.15 mm PITCH
7933 024.300	24.30 mm	330.00 mm	GC100S	12.10 mm B.C. 2.00 mm DUCT DIA. 130.59 mm PITCH
7933 025.300	25.30 mm	330.00 mm	GC100S	12.50 mm B.C. 2.00 mm DUCT DIA. 136.03 mm PITCH
7933 026.300	26.30 mm	330.00 mm	GC100S	13.10 mm B.C. 2.00 mm DUCT DIA. 141.48 mm PITCH
7933 027.300	27.30 mm	330.00 mm	GC100S	13.60 mm B.C. 2.50 mm DUCT DIA. 146.92 mm PITCH
7933 028.300	28.30 mm	330.00 mm	GC100S	14.10 mm B.C. 2.50 mm DUCT DIA. 152.36 mm PITCH
7933 029.300	29.30 mm	330.00 mm	GC100S	14.60 mm B.C. 2.50 mm DUCT DIA. 157.80 mm PITCH
7933 030.300	30.30 mm	330.00 mm	GC100S	15.10 mm B.C. 2.50 mm DUCT DIA. 163.24 mm PITCH
7933 031.300	31.30 mm	330.00 mm	GC100S	15.30 mm B.C. 3.00 mm DUCT DIA. 168.68 mm PITCH
7933 032.300	32.30 mm	330.00 mm	GC100S	16.10 mm B.C. 3.00 mm DUCT DIA. 174.12 mm PITCH

Unground Drill Rod

three helical coolant ducts
(continued)

Item No.	Dia	OAL	Grade	Details
7934 006.300	6.30 mm	330.00 mm	GC100S	2.20 mm B.C. 0.50 mm DUCT DIA. 22.46mm PITCH
7934 007.300	7.30 mm	330.00 mm	GC100S	2.40 MM B.C. 0.65 MM DUCT DIA. 26.21mm PITCH
7934 008.300	8.30 mm	330.00 mm	GC100S	2.70 mm B.C. 0.65 mm DUCT DIA. 29.95mm PITCH
7934 008.800	8.80 mm	330.00 mm	GC100S	2.90 mm B.C. 0.65 mm DUCT DIA. 31.82mm PITCH
7934 010.300	10.30 mm	330.00 mm	GC100S	3.50 mm B.C. 0.80 mm DUCT DIA. 37.44mm PITCH
7934 010.800	10.80 mm	330.00 mm	GC100S	3.50 mm B.C. 0.80 mm DUCT DIA. 39.31mm PITCH
7934 011.800	11.80 mm	330.00 mm	GC100S	4.00 mm B.C. 0.85 mm DUCT DIA. 43.06mm PITCH
7934 012.300	12.30 mm	330.00 mm	GC100S	4.20 mm B.C. 0.90 mm DUCT DIA. 44.93mm PITCH
7934 012.800	12.80 mm	330.00 mm	GC100S	4.35 mm B.C. 0.90 mm DUCT DIA. 46.80mm PITCH
7934 013.800	13.80 mm	330.00 mm	GC100S	4.50 mm B.C. 1.00 mm DUCT DIA. 50.54mm PITCH
7934 014.300	14.30 mm	330.00 mm	GC100S	4.70 mm B.C. 1.00 mm DUCT DIA. 52.42mm PITCH
7934 014.800	14.80 mm	330.00 mm	GC100S	4.90 mm B.C. 1.00 mm DUCT DIA. 54.29 mm PITCH
7934 016.300	16.30 mm	330.00 mm	GC100S	5.50 mm B.C. 1.20 mm DUCT DIA. 59.90mm PITCH
7934 016.800	16.80 mm	330.00 mm	GC100S	5.75 mm B.C. 1.20 mm DUCT DIA. 61.78mm PITCH
7934 018.300	18.30 mm	330.00 mm	GC100S	6.30 mm B.C. 1.40 mm DUCT DIA. 67.39 mm PITCH
7934 019.300	19.30 mm	330.00 mm	GC100S	6.70 mm B.C. 1.40 mm DUCT DIA. 71.14mm PITCH
7934 020.300	20.30 mm	330.00 mm	GC100S	7.10 mm B.C. 1.50 mm DUCT DIA. 74.88mm PITCH
7934 022.300	22.30 mm	330.00 mm	GC100S	7.70 mm B.C. 1.70 mm DUCT DIA. 82.37mm PITCH
7934 024.300	24.30 mm	330.00 mm	GC100S	8.00 mm B.C. 1.75 mm DUCT DIA. 89.86mm PITCH
7934 025.300	25.30 mm	330.00 mm	GC100S	8.10 mm B.C. 1.75 mm DUCT DIA. 93.60 mm PITCH
7934 026.300	26.30 mm	330.00 mm	GC100S	8.20 mm B.C. 1.75 mm DUCT DIA. 97.34 mm PITCH
7934 028.300	28.30 mm	330.00 mm	GC100S	9.00 mm B.C. 2.00 mm DUCT DIA. 104.83 mm PITCH
7934 030.300	30.30 mm	330.00 mm	GC100S	10.00 mm B.C. 2.00 mm DUCT DIA. 112.32 mm PITCH
7934 032.300	32.30 mm	330.00 mm	GC100S	11.00 mm B.C. 2.00 mm DUCT DIA. 119.81 mm PITCH



Item No.	Dia	OAL	Grade
7014 001.200	1.20 mm	330.00 mm	GC100S
7014 001.700	1.70 mm	330.00 mm	GC100S
7014 002.200	2.20 mm	330.00 mm	GC100S
7014 002.700	2.70 mm	330.00 mm	GC100S
7014 003.200	3.20 mm	330.00 mm	GC100S
7014 003.700	3.70 mm	330.00 mm	GC100S
7014 004.200	4.20 mm	330.00 mm	GC100S
7014 004.700	4.70 mm	330.00 mm	GC100S
7014 005.200	5.20 mm	330.00 mm	GC100S
7014 005.700	5.70 mm	330.00 mm	GC100S
7014 006.200	6.20 mm	330.00 mm	GC100S
7014 006.700	6.70 mm	330.00 mm	GC100S
7014 007.200	7.20 mm	330.00 mm	GC100S
7014 007.700	7.70 mm	330.00 mm	GC100S
7014 008.200	8.20 mm	330.00 mm	GC100S
7014 008.700	8.70 mm	330.00 mm	GC100S
7014 009.200	9.20 mm	330.00 mm	GC100S
7014 009.700	9.70 mm	330.00 mm	GC100S
7014 010.200	10.20 mm	330.00 mm	GC100S
7014 010.700	10.70 mm	330.00 mm	GC100S
7014 011.200	11.20 mm	330.00 mm	GC100S
7014 011.700	11.70 mm	330.00 mm	GC100S
7014 012.200	12.20 mm	330.00 mm	GC100S
7014 012.700	12.70 mm	330.00 mm	GC100S
7014 013.200	13.20 mm	330.00 mm	GC100S
7014 013.700	13.70 mm	330.00 mm	GC100S
7014 014.200	14.20 mm	330.00 mm	GC100S
7014 014.700	14.70 mm	330.00 mm	GC100S
7014 015.200	15.20 mm	330.00 mm	GC100S
7014 015.700	15.70 mm	330.00 mm	GC100S
7014 016.200	16.20 mm	330.00 mm	GC100S
7014 017.200	17.20 mm	330.00 mm	GC100S
7014 018.200	18.20 mm	330.00 mm	GC100S
7014 018.700	18.70 mm	330.00 mm	GC100S
7014 019.200	19.20 mm	330.00 mm	GC100S
7014 020.200	20.20 mm	330.00 mm	GC100S
7014 020.700	20.70 mm	330.00 mm	GC100S
7014 021.200	21.20 mm	330.00 mm	GC100S
7014 021.700	21.70 mm	330.00 mm	GC100S
7014 022.200	22.20 mm	330.00 mm	GC100S
7014 023.200	23.20 mm	330.00 mm	GC100S
7014 024.200	24.20 mm	330.00 mm	GC100S
7014 025.200	25.20 mm	330.00 mm	GC100S
7014 025.700	25.70 mm	330.00 mm	GC100S
7014 026.200	26.20 mm	330.00 mm	GC100S
7014 027.200	27.20 mm	330.00 mm	GC100S
7014 028.200	28.20 mm	330.00 mm	GC100S

Item No.	Dia	OAL	Grade
7014 029.200	29.20 mm	330.00 mm	GC100S
7014 030.200	30.20 mm	330.00 mm	GC100S
7014 031.200	31.20 mm	330.00 mm	GC100S
7014 032.200	32.20 mm	330.00 mm	GC100S
7014 034.200	34.20 mm	330.00 mm	GC100S
7014 036.200	36.20 mm	330.00 mm	GC100S
7014 038.200	38.20 mm	330.00 mm	GC100S
7014 040.200	40.20 mm	330.00 mm	GC100S
7016 002.200	2.20 mm	330.00 mm	GC070S
7016 004.200	4.20 mm	330.00 mm	GC070S
7016 005.200	5.20 mm	330.00 mm	GC070S
7016 005.700	5.70 mm	330.00 mm	GC070S
7016 006.200	6.20 mm	330.00 mm	GC070S
7016 006.700	6.70 mm	330.00 mm	GC070S
7016 007.700	7.70 mm	330.00 mm	GC070S
7016 008.200	8.20 mm	330.00 mm	GC070S
7016 009.200	9.20 mm	330.00 mm	GC070S
7016 010.200	10.20 mm	330.00 mm	GC070S
7016 012.200	12.20 mm	330.00 mm	GC070S
7016 012.700	12.70 mm	330.00 mm	GC070S
7016 013.200	13.20 mm	330.00 mm	GC070S
7016 014.200	14.20 mm	330.00 mm	GC070S
7016 016.200	16.20 mm	330.00 mm	GC070S
7021 002.700	2.70 mm	330.00 mm	GC060F
7021 003.200	3.20 mm	330.00 mm	GC060F
7021 003.700	3.70 mm	330.00 mm	GC060F
7021 004.200	4.20 mm	330.00 mm	GC060F
7021 004.700	4.70 mm	330.00 mm	GC060F
7021 005.200	5.20 mm	330.00 mm	GC060F
7021 005.700	5.70 mm	330.00 mm	GC060F
7021 006.200	6.20 mm	330.00 mm	GC060F
7021 006.700	6.70 mm	330.00 mm	GC060F
7021 007.200	7.20 mm	330.00 mm	GC060F
7021 007.700	7.70 mm	330.00 mm	GC060F
7021 008.200	8.20 mm	330.00 mm	GC060F
7021 009.200	9.20 mm	330.00 mm	GC060F
7021 009.700	9.70 mm	330.00 mm	GC060F
7021 010.200	10.20 mm	330.00 mm	GC060F
7021 011.200	11.20 mm	330.00 mm	GC060F
7021 011.700	11.70 mm	330.00 mm	GC060F
7021 012.200	12.20 mm	330.00 mm	GC060F
7021 012.700	12.70 mm	330.00 mm	GC060F
7021 013.200	13.20 mm	330.00 mm	GC060F
7021 013.700	13.70 mm	330.00 mm	GC060F
7021 014.200	14.20 mm	330.00 mm	GC060F
7021 015.700	15.70 mm	330.00 mm	GC060F
7021 016.200	16.20 mm	330.00 mm	GC060F

Item No.	Dia	OAL	Grade
7021 017.700	17.70 mm	330.00 mm	GC060F
7021 019.200	19.20 mm	330.00 mm	GC060F
7021 020.200	20.20 mm	330.00 mm	GC060F
7022 005.200	5.20 mm	330.00 mm	GC080S
7022 006.200	6.20 mm	330.00 mm	GC080S
7022 006.700	6.70 mm	330.00 mm	GC080S
7022 007.200	7.20 mm	330.00 mm	GC080S
7022 007.700	7.70 mm	330.00 mm	GC080S
7022 008.200	8.20 mm	330.00 mm	GC080S
7022 010.200	10.20 mm	330.00 mm	GC080S
7022 010.700	10.70 mm	330.00 mm	GC080S
7022 011.200	11.20 mm	330.00 mm	GC080S
7022 012.200	12.20 mm	330.00 mm	GC080S
7022 013.200	13.20 mm	330.00 mm	GC080S
7022 014.200	14.20 mm	330.00 mm	GC080S
7022 016.200	16.20 mm	330.00 mm	GC080S
7022 026.200	26.20 mm	330.00 mm	GC080S
7105 004.200	4.20 mm	330.00 mm	GC100S
7105 005.200	5.20 mm	330.00 mm	GC100S
7105 006.200	6.20 mm	330.00 mm	GC100S
7105 008.200	8.20 mm	330.00 mm	GC100S
7105 015.200	15.20 mm	330.00 mm	GC100S
7105 020.200	20.20 mm	330.00 mm	GC100S
7105 023.200	23.20 mm	330.00 mm	GC100S
7105 030.200	30.20 mm	330.00 mm	GC100S
7105 032.200	32.20 mm	330.00 mm	GC100S
7146 003.200	3.20 mm	330.00 mm	K88UF
7146 004.200	4.20 mm	330.00 mm	K88UF
7146 005.200	5.20 mm	330.00 mm	K88UF
7146 008.200	8.20 mm	330.00 mm	K88UF
7146 010.200	10.20 mm	330.00 mm	K88UF
7146 012.200	12.20 mm	330.00 mm	K88UF
7146 013.200	13.20 mm	330.00 mm	K88UF
7146 020.200	20.20 mm	330.00 mm	K88UF
7146 025.200	25.20 mm	330.00 mm	K88UF
7147 003.200	3.20 mm	330.00 mm	GC100SX
7147 004.200	4.20 mm	330.00 mm	GC100SX
7147 005.200	5.20 mm	330.00 mm	GC100SX
7147 006.200	6.20 mm	330.00 mm	GC100SX
7147 007.200	7.20 mm	330.00 mm	GC100SX
7147 008.200	8.20 mm	330.00 mm	GC100SX
7147 010.200	10.20 mm	330.00 mm	GC100SX
7147 012.200	12.20 mm	330.00 mm	GC100SX
7147 013.200	13.20 mm	330.00 mm	GC100SX
7147 014.200	14.20 mm	330.00 mm	GC100SX
7147 016.200	16.20 mm	330.00 mm	GC100SX
7147 018.200	18.20 mm	330.00 mm	GC100SX
7147 019.200	19.20 mm	330.00 mm	GC100SX
7147 020.200	20.20 mm	330.00 mm	GC100SX
7147 025.200	25.20 mm	330.00 mm	GC100SX
7187 002.700	2.70 mm	330.00 mm	GC090U
7187 003.700	3.70 mm	330.00 mm	GC090U
7187 004.200	4.20 mm	330.00 mm	GC090U
7187 005.200	5.20 mm	330.00 mm	GC090U
7187 006.200	6.20 mm	330.00 mm	GC090U
7187 006.700	6.70 mm	330.00 mm	GC090U
7187 008.200	8.20 mm	330.00 mm	GC090U
7187 009.700	9.70 mm	330.00 mm	GC090U
7187 012.200	12.20 mm	330.00 mm	GC090U
7187 012.700	12.70 mm	330.00 mm	GC090U
7187 013.200	13.20 mm	330.00 mm	GC090U

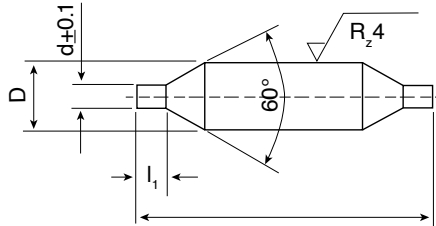
Item No.	Dia	OAL	Grade
7187 016.200	16.20 mm	330.00 mm	GC090U
7187 019.200	19.20 mm	330.00 mm	GC090U
7187 022.200	22.20 mm	330.00 mm	GC090U
7187 024.200	24.20 mm	330.00 mm	GC090U
7187 025.700	25.70 mm	330.00 mm	GC090U
7311 001.200	1.20 mm	330.00 mm	GC120U
7311 002.200	2.20 mm	330.00 mm	GC120U
7311 003.700	3.70 mm	330.00 mm	GC120U
7311 004.200	4.20 mm	330.00 mm	GC120U
7311 005.200	5.20 mm	330.00 mm	GC120U
7311 006.700	6.70 mm	330.00 mm	GC120U
7311 008.200	8.20 mm	330.00 mm	GC120U
7311 009.700	9.70 mm	330.00 mm	GC120U
7311 010.200	10.20 mm	330.00 mm	GC120U
7311 012.700	12.70 mm	330.00 mm	GC120U
7311 015.200	15.20 mm	330.00 mm	GC120U
7311 016.200	16.20 mm	330.00 mm	GC120U
7311 020.200	20.20 mm	330.00 mm	GC120U
7311 026.200	26.20 mm	330.00 mm	GC120U
7319 001.200	1.20 mm	330.00 mm	GC060S
7319 001.700	1.70 mm	330.00 mm	GC060S
7319 002.200	2.20 mm	330.00 mm	GC060S
7319 002.700	2.70 mm	330.00 mm	GC060S
7319 003.200	3.20 mm	330.00 mm	GC060S
7319 003.700	3.70 mm	330.00 mm	GC060S
7319 004.200	4.20 mm	330.00 mm	GC060S
7319 004.700	4.70 mm	330.00 mm	GC060S
7319 005.200	5.20 mm	330.00 mm	GC060S
7319 005.700	5.70 mm	330.00 mm	GC060S
7319 006.200	6.20 mm	330.00 mm	GC060S
7319 006.700	6.70 mm	330.00 mm	GC060S
7319 007.200	7.20 mm	330.00 mm	GC060S
7319 007.700	7.70 mm	330.00 mm	GC060S
7319 008.200	8.20 mm	330.00 mm	GC060S
7319 008.700	8.70 mm	330.00 mm	GC060S
7319 009.200	9.20 mm	330.00 mm	GC060S
7319 009.700	9.70 mm	330.00 mm	GC060S
7319 010.200	10.20 mm	330.00 mm	GC060S
7319 010.700	10.70 mm	330.00 mm	GC060S
7319 011.200	11.20 mm	330.00 mm	GC060S
7319 011.700	11.70 mm	330.00 mm	GC060S
7319 012.200	12.20 mm	330.00 mm	GC060S
7319 012.700	12.70 mm	330.00 mm	GC060S
7319 013.200	13.20 mm	330.00 mm	GC060S
7319 013.700	13.70 mm	330.00 mm	GC060S
7319 014.200	14.20 mm	330.00 mm	GC060S
7319 014.700	14.70 mm	330.00 mm	GC060S
7319 015.200	15.20 mm	330.00 mm	GC060S
7319 015.700	15.70 mm	330.00 mm	GC060S
7319 016.200	16.20 mm	330.00 mm	GC060S
7319 017.200	17.20 mm	330.00 mm	GC060S
7319 018.200	18.20 mm	330.00 mm	GC060S
7319 019.200	19.20 mm	330.00 mm	GC060S
7319 019.700	19.70 mm	330.00 mm	GC060S
7319 020.200	20.20 mm	330.00 mm	GC060S
7319 021.200	21.20 mm	330.00 mm	GC060S
7319 022.200	22.20 mm	330.00 mm	GC060S
7319 022.700	22.70 mm	330.00 mm	GC060S
7319 023.200	23.20 mm	330.00 mm	GC060S
7319 024.200	24.20 mm	330.00 mm	GC060S
7319 025.700	25.70 mm	330.00 mm	GC060S

Item No.	Dia	OAL	Grade
7319 026.200	26.20 mm	330.00 mm	GC060S
7319 032.200	32.20 mm	330.00 mm	GC060S
7352 006.200	6.20 mm	415.00 mm	GC100S
7352 008.200	8.20 mm	415.00 mm	GC100S
7352 010.200	10.20 mm	415.00 mm	GC100S
7352 012.200	12.20 mm	415.00 mm	GC100S
7352 014.200	14.20 mm	415.00 mm	GC100S
7352 016.200	16.20 mm	415.00 mm	GC100S
7352 018.200	18.20 mm	415.00 mm	GC100S
7352 020.200	20.20 mm	415.00 mm	GC100S
7352 030.200	30.20 mm	415.00 mm	GC100S
7352 032.200	32.20 mm	415.00 mm	GC100S
7375 003.200	3.20 mm	330.00 mm	GC080S
7375 013.200	13.20 mm	330.00 mm	GC080S
7375 016.200	16.20 mm	330.00 mm	GC080S



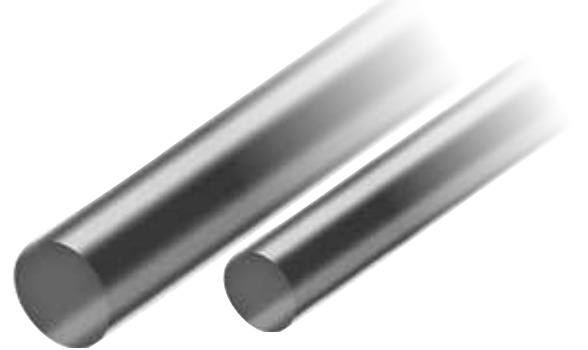
unground | carbide gun drill rod | kidney-shaped coolant duct

Item No.	Dia	OAL	Grade
7376 001.800	1.80 mm	80.00 mm	GC100S
7389 001.700	1.70 mm	350.00 mm	GC100S
7389 001.900	1.90 mm	350.00 mm	GC100S
7389 002.400	2.40 mm	350.00 mm	GC100S
7394 004.200	4.20 mm	350.00 mm	GC100S
7394 004.700	4.70 mm	350.00 mm	GC100S
7394 005.500	5.50 mm	350.00 mm	GC100S
7394 006.100	6.10 mm	350.00 mm	GC100S
7394 006.600	6.60 mm	350.00 mm	GC100S
7394 008.700	8.70 mm	350.00 mm	GC100S

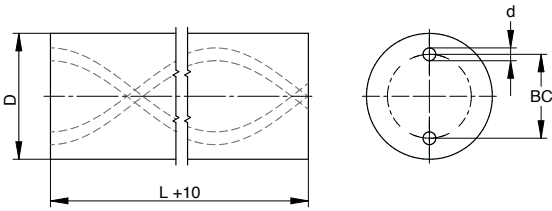


h7 ground | solid carbide center drill blanks

Item No.	Dia	OAL	Grade
7533 003.150	3.15 mm	25.50 mm	GC100S
7533 003.151	3.15 mm	32.50 mm	GC100S
7533 004.000	4.00 mm	36.50 mm	GC100S
7533 005.000	5.00 mm	41.00 mm	GC100S
7533 006.300	6.30 mm	46.00 mm	GC100S
7533 008.000	8.00 mm	51.00 mm	GC100S
7533 010.000	10.00 mm	57.00 mm	GC100S
7533 012.500	12.50 mm	64.00 mm	GC100S
7533 016.000	16.00 mm	72.00 mm	GC100S



with two helical ducts | chamfered & slotted on one end



Item No.	Dia	OAL	Grade	Details
7039 004.165	4.30 mm	330.00 mm	GC100S	BC: 0.80 mm Duct Dia: 0.23mm Lead: 11.12mm
7039 004.195	4.30 mm	330.00 mm	GC100S	BC: 1.00 mm Duct Dia: 0.30mm Lead: 10.61mm
7039 006.325	6.30 mm	330.00 mm	GC100S	BC: 1.50 mm Duct Dia: 0.55mm Lead: 17.68mm
7895 003.008	3.00 mm	48.30 mm	GC100S	BC 0.43 mm Duct Dia: 0.12 mm; Pitch 5.0 mm
7895 003.208	3.00 mm	56.30 mm	GC100S	BC 0.43 mm Duct Dia: 0.12 mm; Pitch 5.0 mm
7895 004.214	4.00 mm	62.30 mm	GC100S	BC 0.75 mm Duct Dia: 0.22 mm; Pitch 11.0 mm





A provider of material-specific carbide substrate grades and custom solutions to secure and enhance tool performance in demanding applications - Ultra Carbide also has the ability to supply **custom tooling** and **wear part** solutions.

Manufacturing is done in our state-of-the-art facilities in Germany that have been supplying leading manufacturers in North America, South America, Europe, and Asia for over 25 years. We are directly connected and affiliated with our three German Carbide plants in Kulmbach, Thurnau, and Berlin – one of the world's largest facilities of its kind. This consortium offers **supply chain security** and **significant availability** of our products. Through single sourcing, we provide strategic benefits as the triune source of premium carbide for innovative world-class solutions.

Ultra Carbide offers extensive knowledge, global support, and premium carbide products for a **tactical competitive advantage** to make you successful.





The UC Grade Family

Overview - Carbide Grade Portfolio



Carbide Grade	GC175S/ DK700UF	GC100SX/ K40XF	GC120ST/ DK007T	GC100SN/ DK400N	GC100F/ K40F	GC060F/ DK120
Classification	K30-K40	K30-K40	K20-K40	K20-K40	K30-K40	K15-K20
Co %	17.5	10.0	12.0	10.0	10.0	6.0
WC incl. doping %	82.5	90.0	88.0	90.0	90.0	94.0
Hardness HV30 (± 50) kg/mm ²	1300	1560	1570	1580	1580	1620
Fracture toughness K1C MPa · m ^{1/2}	15.4	11.5	10.8	11.0	10.5	9.9
Transverse rupt. strength N/mm ²	4000	3700	4100	4100	4100	3200
Average grain size μm	0.5 - 0.8	0.5 - 0.8	0.5 - 0.8	0.5 - 0.8	0.5 - 0.8	0.8 - 1.3

Explanation naming of the carbide grade: GC = German Carbide | digit 1-3 = cobalt content | digit 4 = grain size classification | digit 5 = additional digit

 Approved for Diamond Coating

Our sales team looks forward to your enquires: sales@ultracarbide.com | www.ultracarbide.com

READY²RUN



GC100S/ DK460UF/ K40UF	GC120U/ K44UF	GC060FT/ DK10S	GC080S/ DK255F	GC120UM/ K48SF/ DK502UF	GC070S/ DK120UF	GC090S/ DK450UF	GC060S/ K6UF	GC090U/ K55SF
K20-K40	K20-K30	K10-K20	K20-K30	K10-K20	K10	K10	K05-K10	K05-K10
10.0	12.0	6.0	8.0	12.0	7.0	9.0	6.0	9.0
90.0	88.0	94.0	92.0	88.0	93.0	91.0	94.0	91.0
1620	1690	1690	1720	1760	1850	1850	1870	1920
10.6	10.0	9.8	9.5	9.5	9.6	9.4	9.3	9.3
4100	4000	3300	3800	3900	3500	3800	3900	3800
0.5 - 0.8	0.2 - 0.5	0.8 - 1.3	0.5 - 0.8	0.2 - 0.5	0.5 - 0.8	0.5 - 0.8	0.5 - 0.8	0.2 - 0.5

The UC Grade Family

Application Recommendations



Carbide Grade	GC175S/ DK700UF	GC100SX/ K40XF	GC120ST/ DK007T	GC100SN/ DK400N	GC100F/ K40F	GC060F/ DK120
Drilling		●		●	●	●
End Milling		●	●	●	●	
Reaming						
Tapping	●		●	●		●
Titanium alloys		●	●		●	
Nickel alloys		●				
Aluminium alloys			●			
Heat resistant alloys			●		●	
High-alloy steels						
Stainless steels austenitic			●	●	●	
Stainless steels ferritic			●		●	
Grey cast iron			●		●	
Malleable cast iron					●	
Copper alloys			●		●	
Superalloys Fe/Ni/Co/T			●	●	●	
Hardened metals	●		●			
GFK/GRP			●			
Composite materials					●	
Plastics					●	
Non-ferrous metals						
Wood					●	
Graphite						●

READY²RUN




GC100S/ DK460UF/ K40UF	GC120U/ K44UF	GC060FT/ DK10S	GC080S/ DK255F	GC120UM/ K48SF/ DK502UF	GC070S/ DK120UF	GC090S/ DK450UF	GC060S/ K6UF	GC090U/ K55SF
•	•	•	•	•	•		•	•
•	•		•			•		•
					•		•	
•	•				•			
•	•	•					•	
	•							
			•					•
•	•	•					•	
	•				•			•
•		•	•		•			
•	•	•			•			
•	•	•	•					
•	•	•	•					
•		•	•					•
•	•				•			
	•		•					•
	•				•			•
•	•				•			•
•								•
			•					
•			•					
					•			•

The UC Grade Family

Carbide Grade Portfolio for wear part industry

Carbide Grade		GC200MC	GC150EC	GC150MC
Classification		G40	G30	G30
Co	%	20.0	15.0	15.0
WC incl. doping	%	80.0	85.0	85.0
Hardness HV30 (± 50)	kg/mm ²	1020	1050	1170
Fracture toughness K1C	MPa · m ^{1/2}	*	*	*
Transverse rupt. strength	N/mm ²	3100	2800	3000
Average grain size	μm	1.3 - 2.5	> 6.0	1.3 - 2.5

* not measureable with testing method according Shetty.
Grades marked with a K-ending are corrosion resistant.

 Approved for Diamond Coating

READY²RUN



GC110MC	GC070MC	GC080SNI	GC060F	GC100S	GC070S
G20	G10		K15-K20	K20-K40	K10
11.0	7.0	8.5Ni	6.0	10.0	7.0
89.0	94.0	92.0	94.0	90.0	93.0
1310	1460	1600	1620	1620	1850
14.5	10.6	10.0	9.9	10.6	9.6
2900	2700	3800	3200	4100	3500
1.3 - 2.5	1.3 - 2.5	0.5 - 0.8	0.8 - 1.3	0.5 - 0.8	0.5 - 0.8

ULTRA
CARBIDE



(248) 446-1744
www.ultracarbide.com

24975 Trans X Road
Novi, MI 48375